



UNIVERSITY OF
PORTSMOUTH

INTERNATIONAL STUDENT GUIDE 2023





Welcome from the Vice-Chancellor

Choosing where to study your degree is a life-changing decision which will have a profound effect on your future. You will be pleased to hear that, as a global university, we celebrate diversity through an inclusive culture and a vibrant international community.

Here at the University of Portsmouth, you will expand your knowledge and expertise, and realise your potential by enhancing your employability, building your confidence and developing new friendships and networks.

It is people that make great universities, and everyone at Portsmouth is committed to helping you enjoy the best experience possible.

We look forward to welcoming you!

Professor Graham Galbraith CBE
Vice-Chancellor



Welcome from the Deputy Vice-Chancellor

We are pleased that you are considering the University of Portsmouth as a potential study destination. We are a global university with a student population of 23,000 with 5,700 international students from around 150 countries. We are proud of the diversity we have at this University and you will be assured a warm welcome if you choose to study with us. More importantly, we ensure that our graduates have the hallmarks of a Portsmouth graduate with a global outlook.

Our students will be well prepared for their future careers and the world of work. That is why the latest HESA Graduate Outcomes Survey (2019/20) shows that 94 per cent of our undergraduate students are in work or study within 15 months of graduation.

Our students rate us particularly highly for aspects of their experience as diverse as personal tutors and careers support,* and we always strive to maintain a superior standard of teaching. Our 5-star rating in the QS World University rankings also reflects the excellent education experience you can expect at Portsmouth.

We hope that you will find the information in this guide helpful and that you will consider the University of Portsmouth as your future study destination.

Chris Chang
Deputy Vice-Chancellor
(Global Engagement and Student Life)

*StudentCrowd 2021



Contents

4–53

Why the University of Portsmouth is for you

- 4 Why the University of Portsmouth?
- 6 Students love the island city
- 8 Living in Portsmouth
- 10 Student life
- 12 Student experience
- 16 Advice and support
- 20 Helping you get ready for your future career
- 22 Get the best from global opportunities
- 24 Study in the UK for a term or a year
- 26 English language requirements and support
- 28 Visas and immigration
- 30 Halls of residence
- 32 Accommodation at a glance
- 34 Funding and scholarships
- 40 Acting on the climate emergency
- 44 A campus built for the future
- 46 Sport at Portsmouth
- 48 A health and fitness membership for your mind and body
- 50 Pathway programmes to the University of Portsmouth

54–75

Course information

- 54 Browse our courses by category

76–91

Useful information

- 76 Your steps to apply
- 80 How to apply and entry requirements
- 82 Terms and conditions
- 83 Contact us
- 84 Course index A–Z
- 90 Getting to Portsmouth



94%

GRADUATES IN WORK
AND/OR FURTHER STUDY
HESA GRADUATE
OUTCOMES SURVEY 2019/20

77%

OF OUR RESEARCH IMPACT
RATED AS WORLD-LEADING OR
INTERNATIONALLY EXCELLENT
REF 2021

5,700

INTERNATIONAL
STUDENTS
FROM AROUND 150 COUNTRIES

TOP 150

YOUNG UNIVERSITIES
IN THE WORLD
TIMES HIGHER EDUCATION
YOUNG UNIVERSITIES RANKING 2022

TOP 40

UNIVERSITY IN ENGLAND
FOR STUDENT SATISFACTION
NATIONAL STUDENT SURVEY 2022

83%

SATISFACTION WITH
COURSE QUALITY
PTES POSTGRADUATE TAUGHT
EXPERIENCE SURVEY 2021

5★

UNIVERSITY
QS TOP UNIVERSITIES 2022

TOP 25%

OF UNIVERSITIES FOR
POSTGRADUATE RESEARCH
STUDENT EXPERIENCE
POSTGRADUATE RESEARCH
EXPERIENCE SURVEY 2021

TOP 10

INTERNATIONAL EXPERIENCE
WHATUNI STUDENT CHOICE 2022

Why the University of Portsmouth?

WE ARE DEDICATED TO YOU AND YOUR FUTURE.



At the University of Portsmouth, your degree is a journey of discovery and a chance to find out what you are really capable of.

We offer outstanding teaching, support that lets you achieve more and learning that goes beyond the classroom. Whether you need help to develop study skills or advice on settling into life in a new country, we are here for you every step of your journey. We will help you develop the confidence, skills and knowledge to create the future you want.

Whatever success means to you, you will find it at Portsmouth.

You are welcome

We welcome 5,700 international students from around 150 different countries. So wherever you are coming from, we can help you get to where you want to be.

Dedicated help and guidance

Whatever support you need to help you achieve your goals, our friendly staff are on hand – from

counsellors and chaplains to housing, finance and careers advisers. Plus, of course, your personal tutor.

Superb facilities

We are always improving and updating. Latest spends include a £5.2m Centre for Creative and Immersive XR (eXtended Reality), a £57m sports facility and a £2.3m Centre for Enzyme Innovation to help solve some of the planet's most pressing environmental problems. All of these investments are part of our £400m plan for the future of our campus.

Guaranteed room in halls

We are able to guarantee an offer of a room in University halls of residence to all new, full-time students who accept an offer to join us and meet our accommodation deadlines.*

Excellent teaching

Experience excellent teaching every day, so you can explore new ideas and develop skills that enrich your life – and your prospects.

5-star university

Join a university that has achieved the full five-star rating for excellence in the internationally recognised QS World University rankings 2022.

Excellent employment outcomes

Career prospects for our graduates are excellent, with 94 per cent in work or further study when surveyed 15 months after leaving us.**

Great place to live

Portsmouth is an exciting island city with lots of culture and great entertainment choices.

Passion for the planet

Our University aims to be carbon positive by 2030. And through our Revolution Plastics initiative, we will help to create a more sustainable global economy. As a student here, you can be active in making a better world possible.

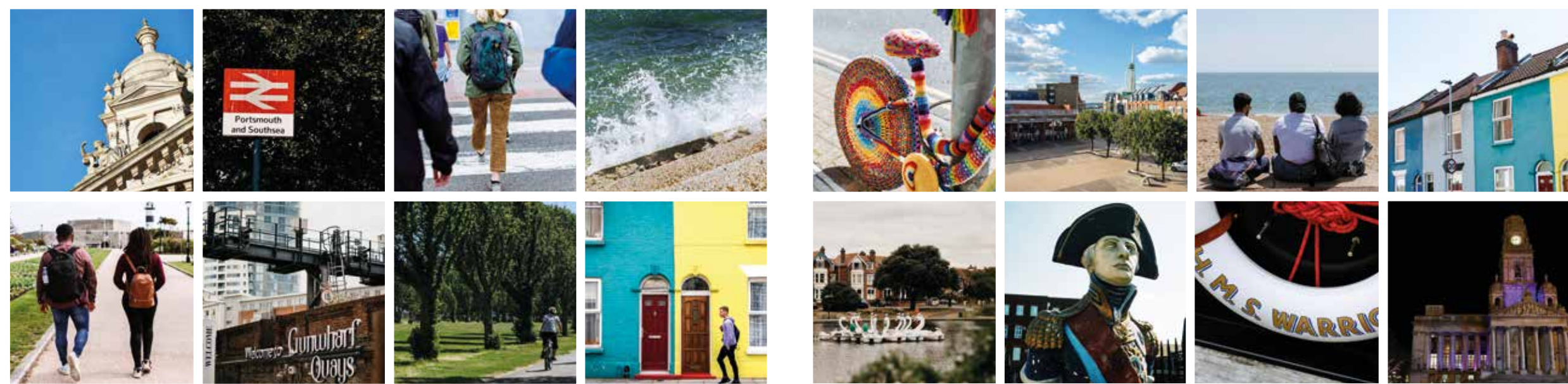
*when starting courses in September 2023

**HESA Graduate Outcomes Survey 2019/20

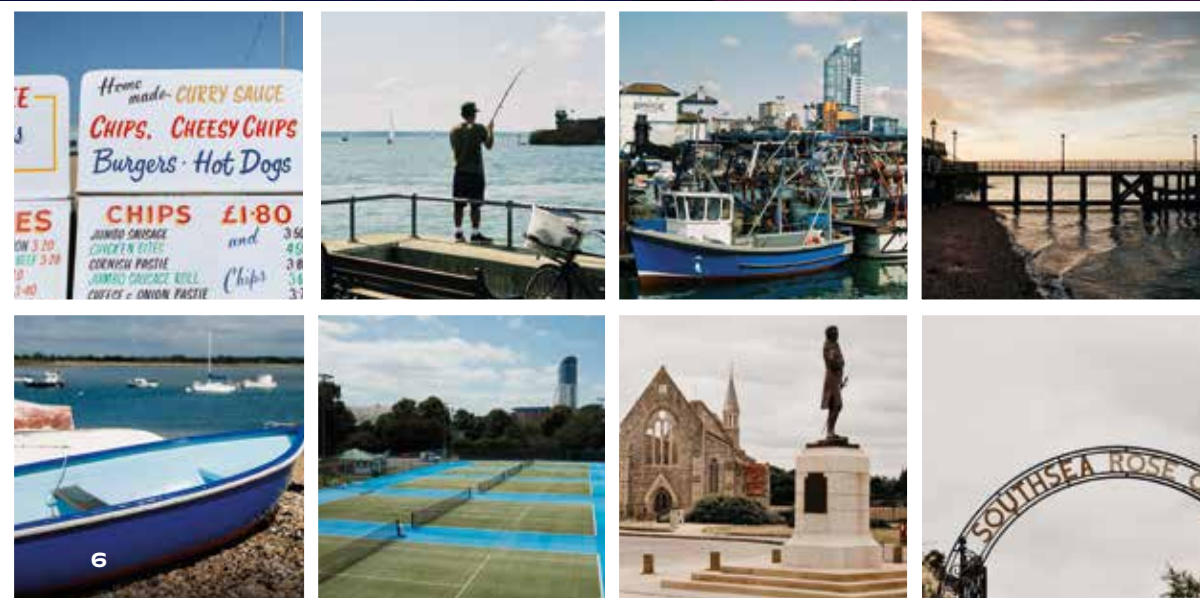


+44 (0)23 9284 3488 | global@port.ac.uk | www.port.ac.uk





Students love the island city



'Going up the Spinnaker Tower to see the views over the whole of Portsmouth.'

Martina

'Victoria Park - a lovely, surprisingly peaceful park in the middle of the busy city.'

Jodi



Living in Portsmouth

A BRILLIANT PLACE TO BE.



Your best days will begin on the UK's only island city: Portsmouth. A place of pretty beaches and vivid street art, rich in naval history and home to all kinds of independent start-up businesses, Portsmouth is an ideal place for an adventure in life and learning.

The University of Portsmouth is central to this unique city on England's south coast. The campus is close to all amenities and just a short walk from the seafront. Living in a hall of residence that feels like home, inspiration will always be on your doorstep. From here, you can go anywhere.

Well connected
Southsea seafront is a short walk from the city centre and main University campus. Here you can enjoy fantastic sea views, four miles of beach and the green spaces of Southsea

Common, ideal for meeting friends and having summer picnics. The Common also hosts live music, running events and even a kite festival.

If you want to see more of the UK, you will find good road and rail links to other major cities. London is just a 90-minute direct train journey away. Heathrow, Gatwick and Southampton airports are also within easy reach. Ferries cross regularly to France and Spain, making Portsmouth an excellent base for exploration.



10 REASONS TO LOVE PORTSMOUTH

1 Café culture and diverse food

It is easy to find a place for coffee or somewhere to eat in Portsmouth. Albert Road is perfect for quirky cafés, bars and restaurants that serve all types of cuisine. You will also find cafés and pubs along the cobbled streets of historic Old Portsmouth.

2 Music and entertainment

The Kings Theatre, the New Theatre Royal and Portsmouth Guildhall all offer a fantastic range of plays, live shows and music concerts. The Wedgewood Rooms in Southsea holds regular comedy events, live bands and club nights. And the annual Victorious music festival on Southsea Common is not to be missed.

3 Beyond the city

From Portsmouth, it is easy to get to London, Brighton, the Isle of Wight and other great places for a weekend stay or day trip. For Europe, you are just a ferry ride or short flight away.



4 A city that is easy to get around

Everything is close by in Portsmouth – you can travel from historic ships to bustling shopping streets in minutes. The city is flat – perfect for walking and cycling.

5 Fun at the beach

You are never far from the beach in Portsmouth. And where there is a beach, you will find fish and chips and ice cream!



6 Spinnaker Tower

Take in panoramic views of the city and the sea from the top of the 110m Spinnaker Tower. You can abseil down if you are feeling brave.



7 A historic and literary city

Portsmouth is the birthplace of Charles Dickens and has also been home to Arthur Conan Doyle and Rudyard Kipling. These literary greats are celebrated at museums throughout the city and with special events.

8 A place you can relax

Portsmouth is known for its green spaces. Southsea Common and Canoe Lake are close to the seafront and are perfect for summer barbecues, winter walks and meeting up with friends.



9 Maritime heritage

Home to the Royal Navy, Portsmouth is a proud maritime city. Portsmouth Historic Dockyard hosts HMS Victory and the award-winning Mary Rose Museum among other famous attractions. You can also visit Southsea Castle, where Henry VIII stood and watched the Mary Rose sink in 1545.

10 The Hotwalls Studios and Old Portsmouth

Part of Old Portsmouth's historic Hotwalls area hosts 13 studios where you can see the work of local artists, designers and creative companies. Great for inspiration and for coffee and cake.

Student life

THE STUDENTS' UNION OFFERS LOTS OF OPPORTUNITIES FOR YOU TO GET INVOLVED, TRY NEW THINGS, AND ACCESS SUPPORT AND ADVICE.



Representation and advice when you need it

Our Students' Union is a charity run by students for students. Elected Officers represent you and your experiences, making sure your voice is heard and you are supported every step of the way. The Union gives students a voice, standing up for things you care about.

Through the Union, you will have access to student groups and Union-led activities that broaden your horizons, increase your employability and help you make lifelong friends. Whatever your needs, the Union is here to offer support and advice throughout your time at university.

The Union Advice Service is available to all students and offers confidential, impartial and non-judgemental support. Through the Service you can get advice and guidance on a range of academic and University issues. Dedicated Union staff can also help to make sure you understand University policies and procedures, and support you in University meetings.

To find out more, visit www.upsu.net.

Student groups

We know it is not always easy to be in a new place. That is why student groups are the perfect way to make friends and find new communities. There are over 150 student-led groups for you to get involved with – from sports to culture, politics, faith and much more.

Everyone is very proud of the communities these groups create, and the exciting opportunities they offer. Get involved and you will gain much more than a degree from your university experience.

Here is a sample of what is on offer:

- Activist Students • Afro-Fusion Dance • Amnesty International • Anime • Book Club • Cinema • Cuban Salsa • DJ • Hockey • Islamic • Lego • Music • SCUBA • Skydive • Tap Dancing

To find out more about student groups at Portsmouth, visit www.upsu.net/student-groups.

The
UNION

The Union welcomes students from across the globe and celebrates a diverse community with a variety of cultural events.



Student experience

WHAT DO OUR INTERNATIONAL STUDENTS THINK OF THE UNIVERSITY OF PORTSMOUTH?

Check out our student stories at www.port.ac.uk/stories.



'My favourite parts of the course are the programming and practical sessions.'

Vlad Oltean
Romania
BSc (Hons) Cyber Security and Forensic Computing

'As a new student, I feel cared for by the faculty. They provide all students with information and guidance both academically and in life, which eased a lot of pressure and worries, and made my study and life easier.'

Xiaoqing Dong
China
MSc Educational Leadership and Management



'I love the fact that you can walk anywhere, for example to the city centre, the Guildhall, Gunwharf Quays and Southsea. It is a perfect fit for students.'

Hamed Alghamdi
Saudi Arabia
BA (Hons) Business and Management



'The Careers and Employability Service have made a huge impact towards my career route. They have helped me in improving my CV and learning how to write an effective cover letter. Through their support, I was able to secure employment after graduating.'

Umme Sumaiyah Meah
Bangladesh
PhD Law



'The University has helped connect me to people and businesses I've had the pleasure of working with. This has given me invaluable work experience, clarified my vision and established a professional foundation I can continue to build on in my career.'

Charles Oduk II
Kenya
MSc Digital Business Management

Chat to our students at www.port.ac.uk/chat-to-us



**'Portsmouth is
a place where
everybody is
welcomed.'**

Inas Zakaria
Malaysia
BA (Hons) Accounting
with Finance

Advice and support

MOVING TO A NEW COUNTRY IS EXCITING BUT CAN BE CHALLENGING. WE TAKE GREAT CARE TO HELP YOU SETTLE IN, SO YOU CAN MAKE THE BEST OF YOUR TIME AT PORTSMOUTH. THE SUPPORT BEGINS WELL BEFORE YOU TRAVEL.

Our offices and advisers in Portsmouth, and around the world, are here to help. We regularly travel overseas to attend events and exhibitions. If we come to your country, we will be very happy to answer your questions in person. See our travel schedule at www.port.ac.uk/meet-us-overseas.

International Orientation Programme

This programme is designed to help you settle in and make new friends before you start your course. It is completely free.



We can help with:

- completing your registration
- settling into your accommodation in Portsmouth before term starts
- learning about the support services available to you
- joining in social events including walking tours, coach tours, sporting events and plenty more

Airport pick-up service

We offer a coach pick-up service on specific dates from London Heathrow airport for a fee. We will meet you and bring you straight to your accommodation. To find out more, visit www.port.ac.uk/how-to-get-here.

International Student Advisers

We want your time with us to be as enjoyable and stress free as possible, so that you are free to focus on your studies and do your best.

Our dedicated advisers are ready to help with:

- immigration and visa advice
- confidential advice
- social events and excursions
- referrals to other support services within the University

Global Community – a whole world within your reach

Join our Facebook group run by our International Student Advice Team. Meet current students, learn about other cultures and find out about great events. With over 5,700 international students at the University from all around the world, you could make a friend for life. Find out more on our Facebook group 'University of Portsmouth – Global Community'.

Student advice and support services

If you have other questions, we offer a range of further support services. Visit www.port.ac.uk/support.

Money matters

If you need advice on budgeting, managing your money or protecting your finances, our Student Finance Centre can advise you on all your financial matters. No appointment necessary. Find out more at www.port.ac.uk/money.

Stay healthy

It is a good idea to register with a doctor as soon as you arrive. We can tell you which doctor's surgery is closest to your accommodation. You may also be able to register at the University Dental Academy and Eye Clinic.

Additional Support and Disability Advice Centre (ASDAC)

If you have a disability, medical condition or additional learning needs which may affect your ability to access the campus, teaching and learning, assessment or examinations, contact ASDAC for confidential advice and guidance. Visit www.port.ac.uk/asdac for more information.

Academic help and support

If you would like advice and guidance on specific academic and study skills, our Academic Skills Unit (ASK) can help with everything from tutorials on essay writing, through to presentations and more. Visit www.port.ac.uk/ask for more information.



We have offices and advisers in Beijing, Delhi, Dhaka, Kuala Lumpur, Lahore, Lagos, Nairobi and Shanghai, as well as in Portsmouth.

Student Wellbeing Service

It is natural to feel a little unsure when you move somewhere new. If you ever need a friendly ear, our wellbeing services offer confidential support. Courses, workshops, self-help resources, in-person or online counselling, wellbeing and mental health support are all available, as well as our popular WhatsUp app.

Chaplaincy

We offer support to all students regardless of faith or world view. A small quiet room is available for reflection, thought and prayer. There are dedicated Islamic prayer rooms, with ablution facilities. For more information, visit www.port.ac.uk/chaplaincy.

Nursery facilities

Our nursery can take care of children aged between six months and four years. If you

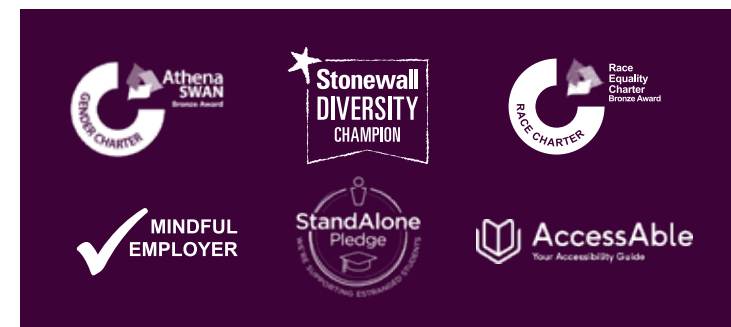
need to apply for a place, please do so as soon as you can.


Maths Café

If you would like help with your mathematical and statistical skills, visit our Maths Café. It is free of charge and you can drop in for one-to-one maths support, or visit the Maths Café resource base. For more information, visit www.port.ac.uk/mathscafe.

Global Café

If you want to meet other students in a friendly, informal environment then the Global Café is for you. Get to know students from other countries, share knowledge and experiences of different cultures and languages, or just chat over a hot drink.



A photograph of two young men smiling and talking outdoors. The man on the left is wearing a dark jacket over a red and blue patterned shirt. The man on the right is wearing a grey and blue jacket. They are standing in front of a background of trees with autumn foliage. The lighting is warm, suggesting late afternoon or early morning.

**'I love Portsmouth
and my advice to
new students is be
ready to explore and
experience life.'**

Ramkumar Ravindran
India
Bsc (Hons) Psychology

Helping you get ready for your future career

WE AIM TO
GIVE YOU ALL
YOU NEED TO
SUCCEED IN
THE WORLD OF
EMPLOYMENT.



Work-related learning

- Our courses are designed to give you a range of skills, so you can show employers you are ready to be a valuable addition to their organisation
- Working environments such as our Dental Academy and industry-standard newsroom for journalism students let you develop and practise skills for your professional career
- Many courses are accredited, approved or recognised by Professional Statutory Regulatory Bodies
- We organise regular visits from employers, many of whom run career-specific seminars, to give you help with finding a job

Learning on the job

- Our dedicated placement offices facilitate work experience with local, national and international employers – from short experiences to summer and year-long industrial placements

- We provide you with a range of volunteering opportunities, so you can gain valuable skills and professional experience for your CV
- We have our own in-house Graduate Recruitment Consultancy who can help you find local graduate roles

Getting you on the career ladder

- The Careers and Employability Service can help you develop your abilities and find opportunities to achieve your ambitions
- You can access the Service from day one of your first year, to up to five years after you graduate
- Career planning advice
- Help to find and apply for graduate jobs
- Support to start your own business
- Personal tutor that can provide guidance on professional development

NO.19

**BEST UNIVERSITIES FOR
CAREERS SERVICE**
STUDENTCROWD 2021

Part-time work

- Many students choose to work part time while they study
- Portsmouth is a city with a wide range of part-time jobs
- The Careers and Employability Service can help you find part-time work
- We advertise hundreds of part-time opportunities within the University, and with employers in Portsmouth and the local area



Get the best from global opportunities

AS WELL AS EXPERIENCING THE UK, YOU CAN ALSO STUDY AND WORK IN OTHER COUNTRIES, THANKS TO OUR CONNECTIONS WITH UNIVERSITIES AND EMPLOYERS ALL OVER THE WORLD.

'My time as an exchange student at Brock University in Canada was incredible. I know this term gets thrown around quite a lot but it's 100% true for me: this was a life-changing opportunity. Without going abroad and studying a new subject, I would have never discovered my interest in sport finance.'

Eddie Koppoe
BSc (Hons) Sports Management
and Development

Find Eddie's story at
www.port.ac.uk/stories



Why study or work abroad?

- Experience another culture
- Gain broader knowledge and skills
- Boost your confidence
- Build a network of international contacts
- Develop skills employers value, such as languages, adaptability and resilience
- Stand out from other graduates with overseas experience on your CV

Where to start

Portsmouth has partnerships with universities around the world – from Europe to North America, South America, Australia, Japan and China. Knowledge of the local language is not always required, as you can attend modules taught in English.

There are also funding opportunities available to support you during these life-changing study and work abroad experiences, such as the Turing Scheme.*

Ask our Global Mobility Team about opportunities available in your subject area. Find out more at www.port.ac.uk/studyabroad.

Contact our Global Mobility Team
E goabroad@port.ac.uk
T +44 (0)23 9284 3149

Learn a language for free

Our Institution-Wide Language Programme (IWLP) gives all students the opportunity to learn a new language, or develop skills in a language previously studied – free of charge. You could even gain credits towards your degree. We offer IWLP language modules in Arabic, British Sign Language, French, German, Italian, Japanese, Mandarin Chinese and Spanish.

Find out more at www.port.ac.uk/learn-a-language.

International Summer Schools

Study abroad does not have to take a term or a year – you could choose a two-week International Summer School instead. On these trips, you will explore famous landmarks and have lessons on local culture, arts and language – perfect for boosting your CV and broadening your horizons.

Previous Summer School locations include China, Malaysia, India and France.

Contact our Summer Schools Team
E summerschools@port.ac.uk

*The information on the Turing Scheme is accurate at the time of printing. Access to funding is subject to successful future bids.

EXPERIENCE UNIVERSITY IN AUSTRALIA

Dual Degrees at University of Portsmouth and Edith Cowan University, Australia

Gain two Bachelor's degrees in less time than it takes to study them separately. This will involve studying at two universities, so you will benefit from the teaching expertise, latest research and facilities of both institutions. And because each university is located in a different country, you will get to experience two new cultures and build an international professional network.

Find out more at www.port.ac.uk/dual-degrees.

Study in the UK

for a term or a year

Already at university?

Our Study Abroad programme offers you the opportunity to study for a half or full academic year and gain credits which you can transfer back to your home university. You will gain experience of a different academic environment, and study in classes alongside full-time British and international students.

As well as lectures, you will learn through smaller seminar and tutorial classes. This gives you an opportunity to work closely with, and get to know, other students on your course.

There are a range of subjects available to study at Portsmouth as part of our Study Abroad programme.

Did you know?

All Study Abroad students are entitled to a 20 per cent alumni discount on selected Master's and PhDs at the University of Portsmouth.

Teaching dates/term	Calendar months
Autumn/fall term	September to January
Spring term	January to June
Full academic year	September to June

Study Abroad accommodation

Join us as a Study Abroad student at Portsmouth in the autumn/fall term and you can secure a guaranteed room in halls of residence. All you need to do is meet our accommodation and deposit deadlines.

If your Study Abroad programme starts in the spring term, there is still a chance we can offer you a place in halls. If we cannot, there is plenty of private rented accommodation in the city, with something suitable for all. You should have no trouble choosing a place to live in Portsmouth.

To discover more and find out how to apply, visit www.port.ac.uk/studyabroad.

Choose to study abroad in Portsmouth and you can:

- Gain transferable credits towards your degree
- Experience UK lifestyle and education
- Develop new skills
- Grow in confidence
- Make new friends



'I chose the University of Portsmouth because of its variety of academic courses, student support and its location. The lecturers are knowledgeable and always there to explain the material further.'

Yekaterina Kolessina
Kazakhstan
Study Abroad Student in the Faculty of Humanities and Social Sciences



English language requirements and support

English language requirements

All of our courses are delivered in English. To complete your course, you will need a sufficient level of English to take part in classes and discussions, and to produce assessed writing such as coursework and examinations.

You need to demonstrate your English level by taking an approved English language test and sending us your results. Different courses need different levels of English, usually measured on the International English Language Test System (IELTS), though we also accept other tests.

You will find a full list of acceptable English language qualifications at www.port.ac.uk/englishlanguage. You can see specific course requirements on the relevant course page at www.port.ac.uk/courses.

Foundation courses

If you are interested in a foundation or pathway course you need a minimum of IELTS band 5.5, with no component below 5.5.

Undergraduate courses

For most of our undergraduate courses, you need a minimum of IELTS band 6.0, with no component below 5.5. Some courses, especially those with a high level of discussion and writing, require higher scores. You can see course-specific details on the individual course webpages.

Postgraduate courses

For most of our Master's degrees, you need a minimum of IELTS band 6.5–7.0, with no component below 6.0. Some courses and PhDs require higher scores. You can see course-specific details on the individual course webpages.



Pre-Sessional English language courses

If you need to improve your English before starting your degree or just want to practise your language skills, apply to study one of our Pre-Sessional English (PSE) language courses either online or on campus.

PSE courses

You will get dedicated support and advice from experienced academic staff, International Student Advisers and your personal Pre-Sessional English tutor. You will study for 25 hours a week, Monday to Friday, in classes of around 14 students. You will have the same tutor throughout your course.

These courses are available to you if you:

- hold a conditional offer for one of our degree courses, but have not yet met the English language entry requirements
- have met the academic conditions and the English language entry requirements, but you want a refresher course in academic English

Available PSE courses for 2023

We offer a range of courses for students who need to improve their English to enter their degree. These vary from 6 to 20 weeks in length. There is also a 4-week course for students who have met the English language requirements but want to practise their English. All PSE courses are available online and on campus.

For course fees, start dates and entry requirements visit www.port.ac.uk/pre-sessional-english.

We also offer Pre-Sessional English courses in China and Thailand. Please contact pse@port.ac.uk for more information.

In-Sessional English

If English is not your first language, you can take part in free In-Sessional English modules designed to fit around your degree. These modules will enable you to improve your academic language and communication skills. Contact ise@port.ac.uk or visit www.port.ac.uk/in-sessional-english for more information.

Need accommodation?

All Pre-Sessional students studying on campus can book a room in our halls of residence during their PSE course. We offer private rooms with shared facilities and free bedding. Additional fees apply.

CONTACT US

E pse@port.ac.uk
T +44 (0)23 9284 6976
W www.port.ac.uk/pre-sessional-english



Visas and immigration

AS AN INTERNATIONAL STUDENT, YOU WILL NEED A VISA TO STUDY IN THE UK. THERE ARE A FEW DIFFERENT TYPES OF VISAS AVAILABLE FROM THE UK GOVERNMENT, BUT THE TYPE YOU WOULD NORMALLY NEED IS A STUDENT ROUTE VISA.

GETTING A VISA WHEN ALREADY IN THE UK

If you are already in the UK and hold a student visa for a different institution, you will still need to apply for a new Student Route visa. You may need to return to your home country to apply for a new visa. You will not be able to register on to your course at Portsmouth until you have applied for a new visa. Find out more at www.port.ac.uk/visa-advice or by emailing the International Student Advice Team at student-visa@port.ac.uk.

PAYING THE IMMIGRATION HEALTH SURCHARGE (IHS)

You will need to pay this if you are applying to study in the UK for a period of more than six months. You will also need to pay the IHS if you are already in the UK and apply to extend your stay. The charge is per student and per dependant (if you have any) per year of study, payable at the time of visa application. If the surcharge is required, but not paid, the application will be refused or treated as invalid and will be rejected. For guidance, visit www.gov.uk/healthcare-immigration-application.

EU STUDENTS

If you are an EU, EEA or Swiss citizen, you will probably need a Student Route visa to study in the UK. The exception to this would be if you hold Settled or Pre-settled status to stay in the UK under the EU Settlement Scheme or already have another type of visa that permits study in the UK.

COLLECTING YOUR BIOMETRIC RESIDENCE PERMIT (BRP)

When completing your visa application form, please state you want to collect your visa from an alternative location. You will need to enter this code: **2HE479**. This will mean your BRP card will be available to collect during registration at the University.

GETTING A CONFIRMATION OF ACCEPTANCE FOR STUDIES (CAS)

Once you meet all of your conditions (including paying your deposit) and accept your offer, we will provide you with a CAS for your visa application. As a sponsor, we are bound by law to abide by the regulations set out under the Student Sponsor Guidance. We may have to make checks on academic progression, length of time spent studying in the UK and financial capabilities of students prior to issuing a CAS.

Deadline for issuing a CAS

If you apply close to the deadline date, the University may contact you to discuss your circumstances before making a final decision on whether it is appropriate to issue you with a CAS statement. You may be asked to provide evidence that you are able to arrange your visa application and arrive in good time.

MORE INFORMATION

- The University of Portsmouth
www.port.ac.uk/visa-advice
- UK Council for International Student Affairs (UKCISA)
www.ukcisa.org.uk
- UK Visas and Immigration
www.gov.uk/student-visa

You can also contact our International Student Advice Team at student-visa@port.ac.uk.



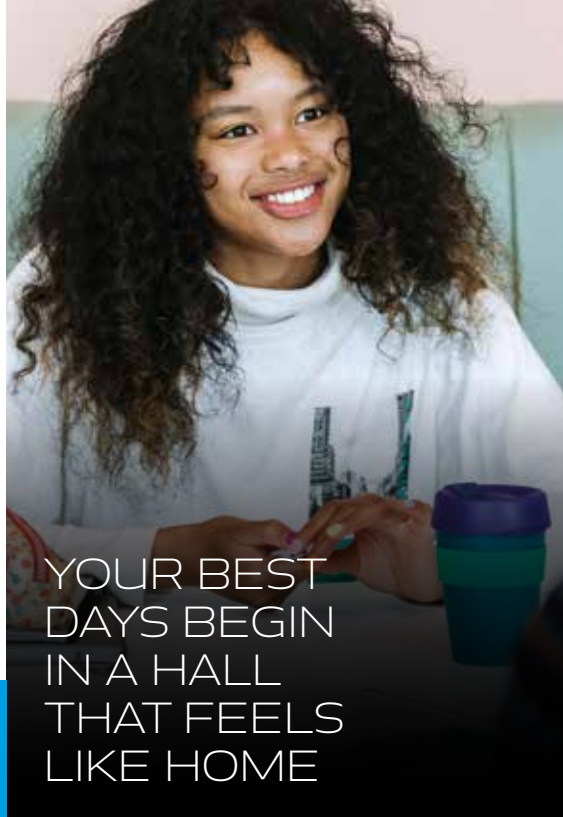
Halls of residence

PORTSMOUTH IS A GREAT PLACE TO LIVE AND STUDY.

There is a huge range of student accommodation to choose from. Your options include:

- Self-catered or catered
- En suite rooms
- Shared flats or corridor rooms
- Studio flats
- Accessible rooms*
- Female-only or male-only designated areas
- Designated quieter areas
- Residential wellbeing and support in halls

WE GUARANTEE ALL NEW FIRST-YEAR STUDENTS A PLACE IN HALLS, PROVIDED YOU HAVE A FIRM OFFER FROM US AND MEET ALL ACCOMMODATION DEADLINES.



YOUR BEST DAYS BEGIN IN A HALL THAT FEELS LIKE HOME

Catherine House

Type of accommodation: Self-catered

Cost per week: £157–£167

Rooms: 709 en suite, flats of 4–6 students

Special features: Heart of the city, near Portsmouth & Southsea train station and Victoria Park

Greetham Street Hall

Type of accommodation: Self-catered

Cost per week: £171–£177

Rooms: 746 en suite, flats of 5–10 students

Special features: City centre location with great common space overlooking the city

Harry Law Hall

Type of accommodation: Self-catered

Cost per week: £148–£173

Rooms: 286 en suite, corridor style, kitchen shared with approximately 6 students

Special features: City centre location and close to Eldon Building

Rees Hall

Type of accommodation: Catered (2 meals per day)

Cost per week: £188

Rooms: 267 en suite, arranged along corridors

Special features: Close to the seafront with two communal TV lounges

Trafalgar Hall

Type of accommodation: Self-catered

Cost per week: £142–£166

Rooms: 288 en suite, flats of 6 students

Special features: Centrally located close to key University buildings, particularly close to Eldon Building

Margaret Rule Hall

Type of accommodation: Self-catered

Cost per week: £159–£172

Rooms: 342 en suite, flats of 4–7 students

Special features: Centre of the city, near train station

Burrell House

Type of accommodation: Catered (2 meals per day, taken in Rees Hall)

Cost per week: £145–£163

Rooms: Arranged along corridors, shared bathroom facilities

Special features: Accommodation close to the seafront and Rees Hall

Rosalind Franklin Halls

Type of accommodation: Self-catered

Cost per week: £153–£166

Rooms: 688 en suite, flats of 4–6 students

Special features: Centrally located close to key University buildings including St Michael's, King Henry and White Swan Building

Please note that all prices are subject to confirmation. All prices are estimated and rounded to the nearest pound for clarity.

The University works in partnership with Yugo (Catherine House) and Unite Students (Margaret Rule Hall, Rosalind Franklin Halls, Greetham Street Hall and Trafalgar Hall).

Visit www.port.ac.uk/accommodation for the latest updates, prices and virtual tours.



Privately rented shared houses/flats

Many students prefer to live independently in the city or surrounding area. Expect to pay around £90–£120 per week for a room in a shared flat or house (usually houses), and £70–£90 for food and household bills per week on top of the rent price.

Lodgings, where the landlord lives on the premises, are usually in the £90–£130 per week range. This will include all your bills and may include some meals too.

Studio flats

We offer 74 self-contained studio flats, located in various halls of residence. Prices range from £166–£173 per week. These are prioritised for new mature and postgraduate students, but new undergraduates are welcome to apply for them too.

Living locally

We advise our students to live no more than 30 minutes by public transport from the University so that you can easily attend your face-to-face sessions.

ResLife Team

You will have access to the Residence Life Team who provide a varied social programme throughout the academic year and welfare support 24/7.

Student Housing Team

Our dedicated Student Housing Team is on hand to help throughout your time at Portsmouth. Find out about visiting halls or ask us any questions about living arrangements.

T +44 (0)23 9284 3214

E student.housing@port.ac.uk

W www.port.ac.uk/accommodation

* We have some accommodation which may be suitable for students with disabilities, please contact Student Housing to discuss, adaptations may be required.



Accommodation at a glance

THE MAIN FEATURES AND FEES FOR OUR HALLS IN 2023/24.

HALL	CATERED	SELF-CATERED	EN SUITE	WEEKLY PRICES (APPROX.)	SESSION FEE (40 WEEKS)
GUILDHALL HALLS					
**Catherine House	–	✓	✓	£157–£167	£6,280–£6,680
*Greetham Street	–	✓	✓	£171–£177	£6,840–£7,080
Harry Law (standard)	–	✓	✓	£148	£5,920
Harry Law (studio)	–	✓	✓	£166–£173	£6,640–£6,920
*Rosalind Franklin (standard)	–	✓	✓	£153	£6,120
*Rosalind Franklin (studio)	–	✓	✓	£166	£6,640
*Margaret Rule (standard)	–	✓	✓	£159	£6,360
*Margaret Rule (studio)	–	✓	✓	£172	£6,880
*Trafalgar (standard)	–	✓	✓	£142	£5,680
*Trafalgar (studio)	–	✓	✓	£166	£6,640
BURRELL AND REES					
Burrell House	✓	–	–	£145–£163	£5,800–£6,520
Rees Hall	✓	–	✓	£188	£7,520

*Marked halls are owned by Unite Students. **Marked hall is owned by Yugo.

The University of Portsmouth takes applications for these buildings, but accommodation agreements for these will be administered directly by Unite Students or Yugo. For further information on Unite Students or Yugo, visit www.unitestudents.com/portsmouth or www.yugo.com/en-gb/global/united-kingdom/portsmouth/catherine-house.

Please note:

Session fees are based on a 40-week occupancy and all fees are estimated and subject to confirmation. Please check www.port.ac.uk/accommodation for the latest information.

Funding and scholarships

WE WANT TO ENSURE YOU HAVE ALL THE FACTS ABOUT FINANCE NOW AND THROUGHOUT YOUR TIME WITH US. OUR STUDENT FINANCE TEAM ARE HERE TO HELP. FOR THE LATEST INFORMATION AND GUIDANCE, PLEASE VISIT [WWW.PORT.AC.UK/MONEY](http://www.port.ac.uk/money).

TUITION FEES

How much you pay in tuition fees as an international student depends on whether your course is based in classrooms, laboratories or both, and whether your course includes a placement year. You can find out what you will pay on the course page on our website.

Academic Year	Tuition Fee	Placement Year Fee
2022–2023	£16,200–£18,300	£1,800–£18,300

Fees for 2023 entry may differ from those in the table. For the most up-to-date information, visit www.port.ac.uk/international-fees-and-funding.

FEE PAYMENT

Fees can be paid in full at registration or in two instalments of 50 per cent, first at registration and then at the start of your second term.

Please see www.port.ac.uk/international-fees-and-funding for detailed information.

DEPOSITS

All international students will need to pay a deposit towards their tuition fees before they can receive their Confirmation of Acceptance for Studies (CAS).

SCHOLARSHIPS

EU Scholarship

If you are an EU, EEA or Swiss student, our Transition Scholarship is applied to your tuition fees, so you pay the same amount as a UK student. The scholarship will be automatically applied to your fees throughout the length of your course.

Vice-Chancellor's Global Development Scholarship

Eligible students can receive the Vice-Chancellor's Global Development Scholarship. This scholarship will take the form of a fee reduction that will apply to your first year of study.

Chancellor's Global Academic Merit Scholarship

This scholarship will take the form of a £5,000 fee reduction that will apply to your first year of study. This scholarship is merit based and we only have a limited number to award.

For full terms and conditions on all our international scholarships, visit www.port.ac.uk/global-scholarships.

ALUMNI DISCOUNT

If you have previously studied an undergraduate programme or Master's course at the University of Portsmouth (on campus or as a study abroad student), you could get a 20 per cent discount on tuition fees for selected Master's and PhDs.*

THE STUDENT FINANCE CENTRE

Our team of experienced staff can provide you with:

- information on funding, such as tuition fee loans
- advice on budgeting for your time at university and living costs in the UK
- support on how to keep your money safe and avoid scams

Managing your money

Once you are at the University, you may still need some help with managing your money. Look out for the Student Finance Team around campus offering advice on budgeting, money-saving tips, competitions and more.

T +44 (0)23 9284 3014 **E studentfinance@port.ac.uk**

*Conditions apply

Cost of living in Portsmouth

If you are studying on a visa, you will need to make adequate financial provision before the start of your course to cover tuition fees, accommodation and general living costs in line with UKVI requirements. Find the latest figures at www.gov.uk/student-visa/money.

We advise you to budget at least £9,500 for each academic year to cover accommodation and living costs. Other living costs depend on your lifestyle. The figures below show the average weekly outgoings for our students living in Portsmouth. Students choosing to live outside of Portsmouth may find the cost of living much higher.



ITEM	COST OF LIVING IN UNIVERSITY HALLS OF RESIDENCE	COST OF LIVING IN PRIVATE RENTED ACCOMMODATION
Halls/rent	£142–£188	£90–£120
Bills (gas/electricity/ water/internet)	Included in halls rent	£40
Food/housekeeping	£35–£40 (less if you are in catered halls)	£35–£40
Travel	£5–£10	£5–£10
Phone	£5–£10	£5–£10
Contents insurance	£2–£3	£2–£3
TV licence	£3	£3
Social costs	£30–£40	£30–£40
TOTAL PER WEEK	£222–£294	£210–£266
TOTAL PER ACADEMIC YEAR (40 WEEKS)	£8,880–£11,760	£8,400–£10,640





'Being part of the University's Tennis Club has had a massive positive impact on my university experience. It is a place where I can leave all the stress of university work and just enjoy myself.'

Vilma Olofsson
Sweden
MA Fashion Marketing





Acting on the climate emergency

OUR RESEARCHERS, STAFF AND STUDENTS ARE TAKING STEPS TO HELP PROTECT THE PLANET.

Revolution Plastics – for a more sustainable world

If we do not take radical action, the consequences of plastic pollution on our health and the environment will be catastrophic. To make our world more sustainable, we must build a global economy in which plastics are recycled and reused, not thrown away.

Our Revolution Plastics initiative unites scientists, business leaders, campaigners and citizens to make change happen through research, innovation and global partnerships.

We are working to:

- transform the potential of plastic recycling
- reduce waste through innovative packaging
- develop new, sustainable materials
- further the world's understanding of microplastics
- examine the effects of exposure to plastics on human health

Find out more at www.port.ac.uk/revolutionplastics.

Restoring millions of oysters to the Solent

The native oyster is almost extinct in many areas around Europe – including in the Solent, the strait along Portsmouth's seafront. We are helping to bring them back from the brink.

We have collaborated with the Blue Marine Foundation (BLUE) to open the country's first oyster restoration hatchery in the Solent. It will provide a million native oysters a year.

Thanks to the native oyster's astonishing capacity for keeping seawater clean by consuming

algae, and the new habitats formed by reefs made of old oyster shells, this restoration project could transform the Solent's water quality and increase its marine biodiversity.

New app to tackle sources of plastic pollution

The University has partnered with Portsmouth-based environmental technology company Jetsam Tech, whose app allows anyone to help map plastic pollution in Portsmouth.

Local people can use the app to submit photos of plastic waste they see in daily life. These photos will form a 'plastic heatmap', revealing when and where waste is building up.

Our researchers will use the data as an evidence base for solutions that will reduce the amount of plastic entering the sea and the wider local environment.

Your university becoming climate positive

We are working hard to achieve our vision of becoming a climate positive university by 2030. That means we will go beyond net

zero and save more emissions than we generate. It is one of the most ambitious environmental targets of any UK university.

We encourage students and staff to live, think and work with sustainability in mind. You can choose to use less energy and water, reduce waste and pick sustainable travel options.

Here is some of the progress we have made:*

- our electricity is from 100 per cent renewable sources
- we have halved our carbon emissions from energy since 2009
- we have increased our recycling rate from 40 per cent to 70 per cent since 2011
- each of our graduation gowns is made from 70 per cent recycled polyester which is manufactured from recycled plastic waste
- students get involved in eco-friendly activities including organised beach cleans and a volunteering scheme to promote recycling

- we are boosting biodiversity on campus with beehives on the grassed roof of Ravelin Sports Centre, and an urban orchard in Ravelin Park
- we aim for all our new buildings to achieve 'Outstanding' ratings for sustainable design from BREEAM[†] and 'A' ratings for energy use and carbon emissions
- we are eliminating single-use plastic from products sold in campus cafés
- we are a Top 10 Vegan Friendly University in the UK,^{††} with 40 per cent of food on our menus being plant-based and rewards for choosing meat-free meals
- printed communications use paper and board from sustainable and recycled resources, vegetable-based inks, and laminates made from sustainable wood pulp – and like this guide they are all fully recyclable

*All facts and figures correct at the time of publication

[†]The world's leading sustainability validation and certification system

^{††}Veganuary and PETA rankings 2021



@UoPGlobal



@UoPGlobal



@UoPGlobal



UniversityofPortsmouthGlobal

www.port.ac.uk



A campus built for the future

WE HAVE COMMITTED £400 MILLION TO THE NEXT PHASE OF OUR CAMPUS EVOLUTION.

Here are some of the amazing facilities that are already up and running:

Learning facilities

Our students have access to all the following, and more:

- Wi-Fi across campus
- free IT support
- laptops on 24-hour loan

- computer suites with specialised software and equipment
- free to download broad range of software, including MS Microsoft Office and Adobe Creative Cloud
- open access areas, printing and scanning facilities, and group working areas

Future Technology Centre (FTC)

Work on real-life projects with companies that want to access the FTC's advanced science, technology, engineering and mathematics (STEM) facilities and specialist equipment.

The University Library

Spacious, comfortable, well-equipped and open 24 hours a day during term time, with:

- meeting pods
- bookable group study rooms with presentation facilities
- soft seating areas
- café serving coffee, snacks and light lunches
- over 390,000 printed books and DVDs, more than 765,000 ebooks, and nearly 59,000 journals
- chat to a friendly librarian in person, online or by phone 24/7
- dedicated faculty librarians offer in-depth subject support and training

Professional Interpreter Training Suite

Featuring the latest technology for training in simultaneous and consecutive interpreting, as used by the European Parliament. The suite is designed to immerse you in a professional setting to develop the interpreting skills required in some of the world's most prestigious organisations.

Forensic Innovation Partnership (FIP)

Our partnership with Hampshire Constabulary sees, for the first time in the UK, operational police staff located on a university campus. The Constabulary's scientific support staff work closely with academics and students to advance forensic education, research and innovation – which has a direct impact on real, professional forensic practice.

Work placement opportunities give students the chance to boost their employability.

Bloomberg Suite

Access the same data, analytics and software used by over a quarter of a million finance professionals globally. Students monitor and analyse real-time financial market data movements, and trade virtually in the Portsmouth Business School Bloomberg Suite.

Replica courtroom

We are one of the few UK universities with a replica courtroom – a realistic copy of a Crown Court, where students can gain the practical experience they need to start their legal career, through moot and simulated court cases.

Centre for Simulation in Health and Care

Our health and care students can use a simulated GP surgery, a mock dispensary, clinical skills simulation suite, one-bedroom flat and two acute hospital training wards.

Dental Pre-Clinical Skills Laboratory

Our 26-seat laboratory takes pre-clinical skills development for our Dental Hygienist and Dental Therapist courses. Each station is equipped with a dental handpiece, suction, overhead dental lamp and computer monitor. This helps students develop their periodontal, restorative and paediatric dentistry skills.

Motion capture technology

Creative students can work with commercial clients and studios who want to use our facilities, including the Vicon optical system.

Psychology students explore human movement, looking at how body language influences our appraisal of others and affects interpersonal interactions.

Centre for Creative and Immersive XR (CCIXR)

The CCIXR, in partnership with Solent Local Enterprise Partnership, is the UK's first integrated facility to support innovation in the creative and digital technologies of virtual, augmented and extended realities, TV studios and photogrammetry.

Business Simulation Suite

The Business Simulation Suite is a flexible learning facility. The room contains sliding partitions that can quickly transform the suite into a mock boardroom, a classroom, or a room for practising speech and presentation skills.

The Technology Enhanced Active Learning (TEAL) room

The TEAL room is a flexible space in which lecturers can share their computer screen to each of the specially-designed tables, which can seat a team of up to nine students. Each table is set up to encourage student participation and interactive learning.

Sport at Portsmouth

PLAY. TRAIN. COMPETE.
REACH YOUR PERSONAL BEST.



Whether you are a top athlete or just want to keep fit, we have facilities and support to help you achieve your goals. The University offers all kinds of ways for you to stay physically active, try new things and make friends.

Play

Play in the gym with our fantastic Technogym kit. Play in our studios with a range of fitness classes. Play in our sports clubs for fun and make friends.

Train

Train to get stronger, fitter, healthier, more focused. Train to earn opportunities through volunteering and coaching. Train to get into the first team. Train to run a sports club. Or simply train for fun.

Compete

Compete against your own personal best in the gym. Compete to earn that spot in the team. Compete against other universities. Compete to achieve great things in study and sport. Compete on the world stage.



'University of Portsmouth has consistently supported me to improve in my sport. They have always been willing to be flexible to help me achieve a sport and study balance.'

Fleur Schrader
BSc (Hons) Social Work
Sports Scholar
Hong Kong Paralympic
Dressage Rider

Sports clubs

Play, train and compete with 35 sports clubs through our Sport and Recreation department. Here is a sample of what is on offer:

- American Football • Archery
- Athletics • Badminton
- Basketball • Boxing
- Cheerleading • Climbing
- and Mountaineering • Cricket
- Cycling • Dance • Dodgeball
- Equestrian • Fencing
- Football (Men's and Women's)
- Futsal • Golf • Gym and Trampoline
- Handball • Hockey
- Lacrosse • Netball • Rowing
- Rugby (Men's and Women's)
- Sailing • Snow Sports
- Softball • Squash • Swimming
- Table Tennis • Taekwondo and Karate
- Tennis • Ultimate Frisbee • Volleyball • Water Polo

Teams take part in leagues and competitions against other universities, including British Universities and Colleges Sports (BUCS) competitions. Alternatively, campus sport leagues offer a chance to compete socially against student and staff teams.

Skills development

Sports coaching, officiating and volunteering can be great fun. They can also enhance your employability. We offer a wide range of opportunities for you to develop new skills and gain extra qualifications through supported community placements at schools, events and clubs.

Sport scholarships

In line with the University's focus on unlocking potential and enabling students to excel, we are committed to helping you reach the top of your game. We offer dedicated support and top-quality coaching.

The University has a history of sporting success, with Olympians, Paralympians and other international competitors having studied here. Our Sports Scholarship Scheme can assist high-level athletes to achieve their goals during their time with us. Find out more about how and when to apply at www.port.ac.uk/sport-scholarships.

Visit sport.port.ac.uk



A health and fitness membership for your mind and body

PLAY, TRAIN AND COMPETE
AT RAVELIN SPORTS CENTRE.

Ravelin Sports Centre is the perfect place for you to meet new people, try different activities, reach your fitness goals and compete in the sports you love.

Whether you exercise regularly or are looking to try something new, you are welcome at Ravelin.

Offering the latest facilities, a range of fitness classes and courses, personal training and a variety of sports clubs, Ravelin Sports Centre has something for everyone. Your mind can benefit as much as your body. You will find plenty of opportunities for mindful moments while flexing in a yoga class, relaxing in the

sauna and steam room, or enjoying soothing views of tree-filled parkland through the swimming pool's great glass walls. Whatever reason you choose to join us, there are flexible, affordable student membership options and a free 'UoP Sport' app for information, bookings and timetables.

Superb facilities

- 25m swimming pool with 8 lanes
- sauna and steam room
- 8 court sports hall
- 175-station fitness suite
- 3 fitness studios
- 2 squash courts
- bouldering and climbing wall
- ski simulator
- café
- community orchard

Step inside

Rising through the centre of the building, from basement to roof, scaling the impressive climbing wall will be a challenge like no other. And with large windows to the historic parkland outside, taking a dip in the indoor pool will feel like you are swimming in the open air.

Step it up

Thanks to the latest fitness technology, a workout in the gym, virtual skiing or class with friends will keep your health goals on track. Our 175-station gym features equipment by Technogym, the leaders in innovation, technology and digital connected fitness. Combine all your physical activity data, track your progress and start your personalised programme with the free 'UoP Fitness' app. A wide range of cardiovascular, resistance and free-weights will help you customise your workouts.

The friendly fitness team delivers a wide range of high-quality classes that are recognised worldwide. A range of Les Mills classes are perfect for any level of fitness. You can also play, train or compete in a variety of sports in our indoor, above-ground-level sports hall.

A step forward for sustainability

Designed to the highest sustainability credentials, Ravelin Sports Centre aims to be zero carbon. Renewable energy is generated from roof solar panels and internal heat recovery systems. Its grass roof with beehives and a wildflower amphitheatre events space encourage biodiversity in the surrounding areas.

Get in touch or speak to us

- f @UOPsport
- ig @UOPsport
- tw @UOPsport
- 📞 +44 (0)23 9284 5555
- 🌐 sport.port.ac.uk

Pathway programmes to the University of Portsmouth

Pathways to your degree

If you are an international student who does not qualify for direct entry, you may be able to begin your pathway at International College Portsmouth (ICP) and graduate with a degree from the University. ICP has helped over 4,500 students from more than 100 nationalities progress to their chosen University course.

ICP is an embedded college to the University and is centrally located on campus. You will have the benefit of learning in smaller classes with additional teaching sessions by highly qualified lecturers and tutors. You will also enjoy full access to all the same services and facilities a University student has. Successful completion of an ICP programme gives you guaranteed progression to the University.

The College offers Pre-Sessional English, University Foundation (Year 0), First Year Degree (Year 1) courses and Pre-Master's. ICP offers a flexible entry system of three intakes each year (January, June and September), so you can begin your studies at a time that suits you. If you are interested in studying at ICP, you will need to submit an online application on the ICP website.



Undergraduate pathways

- Accounting and Finance
- Architecture, Design and Fashion
- Business and Management
- Computing
- Engineering
- Law, Politics and International Relations
- Mathematics
- Media and Games Technologies
- Property and Surveying
- Science

Postgraduate pathways

- Business and Management
- Education
- Finance
- International Relations and Criminal Justice
- Logistics and Supply Chain Management
- Science and Engineering

*Fees shown are for 2022 entry. Fees for 2023 entry may differ. For the most up-to-date information, visit www.port.ac.uk/icp.

Duration

Undergraduate programmes

Year 0:
One or two semesters

Year 1:
Two semesters

Postgraduate programmes

Pre-Master's:
One semester

Fees*

Undergraduate:

One semester: £8,300

Two semesters: £14,300—£15,300

Postgraduate: £8,150—£8,400

Find out more

T +44 (0)23 9284 8540

E admission@icp.port.ac.uk

W www.port.ac.uk/icp

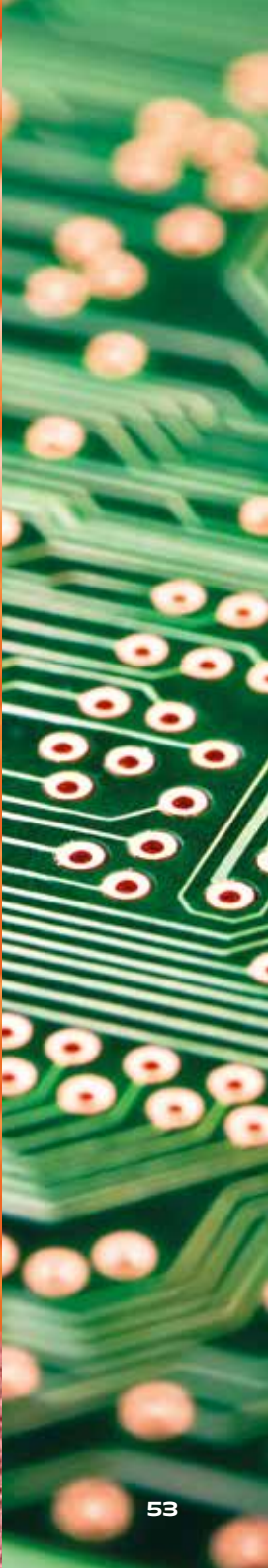


UNIVERSITY OF
PORTSMOUTH



'I love the practical side of my course where in almost every module I do coursework, to develop more in-depth knowledge which can't be obtained by lectures only.'

Kaouthar Stambouli
Algeria
MEng Electrical
Engineering



Browse our courses by category

VISIT WWW.PORT.AC.UK/COURSES FOR SPECIFIC ENTRY REQUIREMENTS — YOU WILL ALSO FIND DETAILS ABOUT OUR DISTANCE LEARNING AND STUDY ONLINE COURSES.

ACCOUNTING, ECONOMICS AND FINANCE

UNDERGRADUATE	
Course title	Duration
BA (Hons) Accountancy and Financial Management (Top-up)	2 years full time (Top-up)
BA (Hons) Accounting with Finance	3 years full time, 4 years sandwich with work placement
BSc (Econ) (Hons) Economics	3 years full time, 4 years sandwich with work placement
BSc (Econ) (Hons) Economics, Finance and Banking	3 years full time, 4 years sandwich with work placement
BA (Hons) Economics and Management	3 years full time, 4 years sandwich with work placement
BA (Hons) Finance with Business Communication (Top-up)	1 year full time (Top-up), 2 years full time (Top-up)
BA (Hons) Financial Management	3 years full time, 4 years sandwich with work placement
BSc (Hons) Mathematics for Finance and Management	3 years full time, 4 years sandwich with work placement

POSTGRADUATE	
Course title	Duration
MSc Accounting and Data Analytics	1 year full time, 30 months part time
MSc Accounting and Finance	1 year full time, 30 months part time
MPhil Accounting and Financial Management	2 years full time, 4 years part time
PhD Accounting and Financial Management	3 years full time, 6 years part time
MPhil Economics and Finance	2 years full time, 4 years part time
PhD Economics and Finance	3 years full time, 6 years part time
MSc Economics, Finance and Banking	1 year full time, 2 years part time

MSc Finance	1 year full time
MSc Forensic Accounting	1 year full time, 30 months part time
MSc International Finance and Banking	1 year full time

ARCHITECTURE AND SURVEYING

UNDERGRADUATE	
Course title	Duration
BA (Hons) Architecture	3 years full time, 4 years sandwich with work placement
BSc (Hons) Building Surveying	3 years full time, 4 years sandwich with work placement
BA (Hons) Interior Architecture and Design	3 years full time, 4 years sandwich with work placement
BSc (Hons) Property Development	3 years full time, 4 years sandwich with work placement
BSc (Hons) Quantity Surveying	3 years full time, 4 years sandwich with work placement

POSTGRADUATE	
Course title	Duration
MArch Architecture	2 years full time, 4 years part time
Final Examination in Professional Practice (Part 3) Architecture	1 year part time
International Professional Practice (Part 3) Architecture	1 year part time
MPhil Architecture	2 years full time, 4 years part time
PhD Architecture	3 years full time, 6 years part time
MSc Building Information Management	1 year full time, 2 years part time
MA Conservation Architecture	1 year full time, 2 years part time

MORE INFORMATION

The majority of courses start in September; all courses with additional start dates are highlighted in the key.

English language requirements — pages 26–27
Fees and funding — pages 34–36
Entry requirements — pages 80–81

For full course details, including tuition fees and start dates, please visit the course pages on our website.

Key to course listings

- Faculty of Business and Law
- Faculty of Creative and Cultural Industries
- Faculty of Humanities and Social Sciences
- Faculty of Science and Health
- Faculty of Technology

Additional start dates

J January

MRes Creative Industries	1 year full time, 2 years part time	J
MA Interior Architecture and Design	1 year full time, 2 years part time	J
MSc Quantity Surveying	1 year full time, 2 years part time	
MSc Real Estate Management	1 year full time, 2 years part time	
MA Sustainable Cities	1 year full time, 2 years part time	

BIOLOGICAL SCIENCES

UNDERGRADUATE		
Course title	Duration	
BSc (Hons) Biochemistry	3 years full time, 4 years sandwich with work placement	
BSc (Hons) Biology	3 years full time, 4 years sandwich with work placement	
BSc (Hons) Biomedical Science	3 years full time, 4 years sandwich with work placement	
BSc (Hons) Marine Biology	3 years full time, 4 years sandwich with work placement	

POSTGRADUATE		
Course title	Duration	
MSc Applied Aquatic Biology	1 year full time, 2 years part time	
MPhil Biological Sciences	2 years full time, 4 years part time	
PhD Biological Sciences	3 years full time, 6 years part time	
MSc Biotechnology	1 year full time, 2 years part time	J
MSc Medical Biotechnology	1 year full time, 2 years part time	J
MRes Science and Health	1 year full time, 2 years part time	J

MORE INFORMATION

The majority of courses start in September; all courses with additional start dates are highlighted in the key.

English language requirements – pages 26–27

Fees and funding – pages 34–36

Entry requirements – pages 80–81

For full course details, including tuition fees and start dates, please visit the course pages on our website.

Key to course listings

Faculty of Business and Law

Faculty of Creative and Cultural Industries

Faculty of Humanities and Social Sciences

Faculty of Science and Health

Faculty of Technology

Additional start dates

J January

BUSINESS, MANAGEMENT AND MARKETING

UNDERGRADUATE		
Course title	Duration	
BA (Hons) Business and Human Resource Management	3 years full time, 4 years sandwich with work placement	
BA (Hons) Business and Management	3 years full time, 4 years sandwich with work placement	
BA (Hons) Business Management and Entrepreneurship	3 years full time, 4 years sandwich with work placement	
BSc (Hons) Business and Supply Chain Management	3 years full time, 4 years sandwich with work placement	
BA (Hons) Business with Business Communication (Top-up)	1 year full time (Top-up), 2 years full time (Top-up)	
BA (Hons) Digital Marketing	3 years full time, 4 years sandwich with work placement	
BA (Hons) Fashion Marketing	3 years full time, 4 years sandwich with work placement	
BA (Hons) International Business	3 years full time, 4 years sandwich with work placement	
BA (Hons) International Business Communication (Top-up)	1 year full time (Top-up), 2 years full time (Top-up)	J
BA (Hons) International Trade and Business Communication (Top-up)	1 year full time (Top-up), 2 years full time (Top-up)	J
BA (Hons) International Trade, Logistics and Business Communication (Top-up)	1 year full time (Top-up), 2 years full time (Top-up)	J
LLB (Hons) Law with Business	3 years full time, 4 years sandwich with work placement	
BA (Hons) Marketing	3 years full time, 4 years sandwich with work placement	

POSTGRADUATE		
Course title	Duration	
DBA Professional Doctorate in Business Administration	4–7 years part time	J
MA Business Communication for International Leadership	1 year full time	J
MA Business Communication for International Leadership (with Professional Experience)	2 years full time with work placement	J
MSc Business and Management	1 year full time, 3 years part time	
MSc Digital Business Management	1 year full time, 2 years part time	J

MA Digital Marketing	1 year full time, 2 years part time	J
MA Fashion Marketing	1 year full time, 2 years part time	
MA Fashion Marketing (with Professional Experience)	18 months full time	
MSc Human Resource Development (Top-up)	6 months full time (Top-up), 9 months part time (Top-up)	
PgDip Human Resource Management	2 years part time	
MSc Human Resource Management	1 year full time	
MSc Human Resource Management (Top-up)	6 months full time (Top-up), 9 months part time (Top-up)	
MSc Innovation Management and Entrepreneurship	1 year full time, 2 years part time	
MSc International Business and Management	14 months full time	J
MSc International Human Resource Management	1 year full time	
MA International Marketing	1 year full time, 2 years part time	J
MSc Leadership and Management (Top-up)	1 year part time (Top-up)	J
MPhil Marketing	2 years full time, 4 years part time	
PhD Marketing	3 years full time, 6 years part time	
MA Marketing Analytics	1 year full time, 2 years part time	
MSc Occupational Health, Safety and Environmental Management	3 years part time	J
MSc Occupational Health and Safety Management	3 years part time	J
MPhil Operations and Systems Management	2 years full time, 4 years part time	
PhD Operations and Systems Management	3 years full time, 6 years part time	
MPhil Organisation Studies and Human Resource Management	2 years full time, 4 years part time	
PhD Organisation Studies and Human Resource Management	3 years full time, 6 years part time	
MSc Project Management	1 year full time (September intake), 15 months full time (January intake)	J
MSc Risk, Crisis and Resilience Management	1 year full time, 2 years part time	
MBA Strategic Leadership	2 years part time	
MPhil Strategy, Enterprise and Innovation	2 years full time, 4 years part time	
PhD Strategy, Enterprise and Innovation	3 years full time, 6 years part time	

CHILDHOOD, YOUTH STUDIES AND EDUCATION

UNDERGRADUATE

Course title	Duration
BA (Hons) Childhood and Youth Studies	3 years full time, 4 years sandwich with work placement
BA (Hons) Childhood and Youth Studies with Criminology	3 years full time, 4 years sandwich with work placement
BA (Hons) Childhood and Youth Studies with Psychology	3 years full time, 4 years sandwich with work placement
BA (Hons) Early Childhood Studies	3 years full time, 4 years sandwich with work placement
BA (Hons) Education Studies (Top-up)	1 year full time (Top-up)
CertEd Further Education and Training	1 year full-time
BEd (Hons) Primary Education with Qualified Teacher Status	3 years full time

POSTGRADUATE

Course title	Duration
EdD Professional Doctorate in Education	4–6 years part time
PgCert Educational Leadership and Management	6 months full time, 1 year part time
PgDip Educational Leadership and Management	1 year full time, 2 years part time
MSc Educational Leadership and Management	1 year full time, 2 years part time
MPhil Education and Sociology	2 years full time, 4 years part time
PhD Education and Sociology	3 years full time, 6 years part time
MA Education Studies	1 year full time, 2 years part time
MRes Humanities and Social Sciences	1 year full time, 2 years part time

MORE INFORMATION

The majority of courses start in September; all courses with additional start dates are highlighted in the key.

English language requirements — pages 26–27
Fees and funding — pages 34–36
Entry requirements — pages 80–81

For full course details, including tuition fees and start dates, please visit the course pages on our website.

Key to course listings

Faculty of Business and Law

Faculty of Creative and Cultural Industries

Faculty of Humanities and Social Sciences

Faculty of Science and Health

Faculty of Technology

Additional start dates

J January

COMPUTER GAMES, ANIMATION AND DIGITAL TECHNOLOGIES

UNDERGRADUATE

Course title	Duration	
BA (Hons) Animation	3 years full time, 4 years sandwich with work placement	
BSc (Hons) Computer Animation and Visual Effects	3 years full time, 4 years sandwich with work placement	
BA (Hons) Computer Games Art	3 years full time, 4 years sandwich with work placement	...
BA (Hons) Computer Games Design	3 years full time, 4 years sandwich with work placement	...
BSc (Hons) Computer Games Production	3 years full time, 4 years sandwich with work placement	
BSc (Hons) Computer Games Technology	3 years full time, 4 years sandwich with work placement	
BA (Hons) Creative Computing with Foundation Year	4 years full time, 5 years sandwich with work placement	
BSc (Hons) Creative Computing with Foundation Year	4 years full time, 5 years sandwich with work placement	
BSc (Hons) Creative Media Technologies	3 years full time, 4 years sandwich with work placement	
BSc (Hons) Creative Media Technologies (L6 Top-up)	1 year full time	
BA (Hons) Creative Music Technology (Top-up)	1 year full time (Top-up)	
BSc (Hons) Interactive Technologies	3 years full time, 4 years sandwich with work placement	
BSc (Hons) Music Technology	3 years full time, 4 years sandwich with work placement	
BSc (Hons) Virtual and Augmented Reality	3 years full time, 4 years sandwich with work placement	

MORE INFORMATION

The majority of courses start in September; all courses with additional start dates are highlighted in the key.

English language requirements — pages 26–27
Fees and funding — pages 34–36
Entry requirements — pages 80–81

For full course details, including tuition fees and start dates, please visit the course pages on our website.

Key to course listings

- Faculty of Business and Law
- Faculty of Creative and Cultural Industries
- Faculty of Humanities and Social Sciences
- Faculty of Science and Health
- Faculty of Technology

Additional start dates
J January

... Course subject to approval

POSTGRADUATE

Course title	Duration
MA Creative Technologies	1 year full time, 2 years part time
MSc Creative Technologies	1 year full time, 2 years part time
MPhil Creative Technologies	2 years full time, 4 years part time
PhD Creative Technologies	3 years full time, 6 years part time

COMPUTING

UNDERGRADUATE

Course title	Duration
BSc (Hons) Computer Networks	3 years full time, 4 years sandwich with work placement
BSc (Hons) Computer Science	3 years full time, 4 years sandwich with work placement
MEng Computer Science	4 years full time, 5 years sandwich with work placement
BSc (Hons) Computing	3 years full time, 4 years sandwich with work placement
BSc (Hons) Cyber Security and Forensic Computing	3 years full time, 4 years sandwich with work placement
BSc (Hons) Data Science and Analytics	3 years full time, 4 years sandwich with work placement
BSc (Hons) Software Engineering	3 years full time, 4 years sandwich with work placement

POSTGRADUATE

Course title	Duration
MSc Computer Network Administration and Management	1 year full time (September intake), 3 years part time (September intake), 16 months full time (January intake) J
MPhil Computing	2 years full time, 4 years part time
PhD Computing	3 years full time, 6 years part time
MSc Cyber Security and Forensic Information Technology	1 year full time, 3 years part time J
MSc Data Analytics	1 year full time, 2 years part time
MSc Data Analytics (with Professional Experience)	18 months full time
MSc Information Systems	1 year full time (September intake), 3 years part time (September intake), 16 months full time (January intake) J

CRIMINOLOGY, CYBERCRIME AND FORENSICS

UNDERGRADUATE

Course title	Duration
BA (Hons) Childhood and Youth Studies with Criminology	3 years full time, 4 years sandwich with work placement
BSc (Hons) Counter Terrorism, Intelligence and Cybercrime (Dual Degree)	3.5 years full time with a year abroad
BSc (Hons) Criminology and Criminal Justice	3 years full time, 4 years sandwich with work placement
BSc (Hons) Criminology and Cybercrime	3 years full time, 4 years sandwich with work placement
BSc (Hons) Criminology and Forensic Studies	3 years full time, 4 years sandwich with work placement
BSc (Hons) Criminology with Environmental Justice	3 years full time, 4 years sandwich with work placement
BSc (Hons) Criminology with Psychology	3 years full time, 4 years sandwich with work placement
BSc (Hons) Cyber Security and Forensic Computing	3 years full time, 4 years sandwich with work placement
BSc (Hons) Forensic Psychology	3 years full time, 4 years sandwich with work placement
LLB (Hons) Law with Criminology	3 years full time, 4 years sandwich with work placement
BSc (Hons) Professional Policing	3 years full time, 4 years sandwich with work placement
BSc (Hons) Sociology with Criminology	3 years full time, 4 years sandwich with work placement

POSTGRADUATE

Course title	Duration
MSc Criminal Justice	1 year full time, 2 years part time

MORE INFORMATION

The majority of courses start in September; all courses with additional start dates are highlighted in the key.

English language requirements — pages 26–27
Fees and funding — pages 34–36
Entry requirements — pages 80–81

For full course details, including tuition fees and start dates, please visit the course pages on our website.

Key to course listings

- Faculty of Business and Law
- Faculty of Creative and Cultural Industries
- Faculty of Humanities and Social Sciences
- Faculty of Science and Health
- Faculty of Technology

Additional start dates

- January
- Course subject to approval

DCrimJ Professional Doctorate in Criminal Justice	4–7 years part time
MPhil Criminal Justice Studies	2 years full time, 4 years part time
PhD Criminal Justice Studies	3 years full time, 6 years part time
MSc Cyber Security and Forensic Information Technology	1 year full time, 3 years part time
MSc Forensic Psychology	1 year full time, 2 years part time
MRes Humanities and Social Sciences	1 year full time, 2 years part time
MSc International Criminal Justice	1 year full time
MSc International Criminal Justice (with Professional Experience)	2 years full time with work placement
DSyRM Professional Doctorate in Security Risk Management	4–7 years part time

DRAMA, MUSIC AND PERFORMING ARTS

UNDERGRADUATE

Course title	Duration
BA (Hons) Drama and Performance	3 years full time, 4 years sandwich with work placement
BA (Hons) Musical Theatre	3 years full time, 4 years sandwich with work placement
BSc (Hons) Music Technology	3 years full time, 4 years sandwich with work placement

POSTGRADUATE

Course title	Duration
MPhil Art, Design and Performance	2 years full time, 4 years part time
PhD Art, Design and Performance	3 years full time, 6 years part time
MRes Creative Industries	1 year full time, 2 years part time
MA Theatre: Socially Engaged Practice	1 year full time, 2 years part time

EARTH SCIENCES

UNDERGRADUATE

Course title	Duration
BSc (Hons) Geology	3 years full time, 4 years sandwich with work placement
BSc (Hons) Palaeontology	3 years full time, 4 years sandwich with work placement

POSTGRADUATE

Course title	Duration
MSc Engineering Geology	1 year full time, 2 years part time
MSc Environmental Geology and Contamination	1 year full time, 2 years part time
MPhil Environment, Geography and Geosciences	2 years full time, 4 years part time
PhD Environment, Geography and Geosciences	3 years full time, 6 years part time
MSc Geological and Environmental Hazards	1 year full time, 2 years part time
MRes Science and Health	1 year full time, 2 years part time

ENGINEERING

UNDERGRADUATE

Course title	Duration
BEng (Hons) Civil Engineering	3 years full time, 4 years sandwich with work placement
MEng Civil Engineering	4 years full time, 5 years sandwich with work placement
BEng (Hons) Construction Engineering Management	3 years full time, 4 years sandwich with work placement
BEng (Hons) Electronic Engineering	3 years full time, 4 years sandwich with work placement
MEng Electronic Engineering	4 years full time, 5 years sandwich with work placement
BEng (Hons) Engineering and Technology with Foundation Year	4 years full time, 5 years sandwich with work placement
BEng (Hons) Mechanical Engineering	3 years full time, 4 years sandwich with work placement
MEng Mechanical Engineering	4 years full time, 5 years sandwich with work placement
BEng (Hons) Mechanical and Manufacturing Engineering	3 years full time, 4 years sandwich with work placement
BSc (Hons) Product Design and Innovation	3 years full time, 4 years sandwich with work placement
BEng (Hons) Renewable Energy Engineering	3 years full time, 4 years sandwich with work placement
MEng Renewable Energy Engineering	4 years full time, 5 years sandwich with work placement
BSc (Hons) Software Engineering	3 years full time, 4 years sandwich with work placement

POSTGRADUATE

Course title	Duration
MSc Advanced Manufacturing	1 year full time (September intake), 3 years part time (September intake), 16 months full time (January intake)
MSc Civil Engineering	1 year full time, 2 years part time
MPhil Civil Engineering and Surveying	2 years full time, 4 years part time
PhD Civil Engineering and Surveying	3 years full time, 6 years part time
MSc Construction Project Management	1 year full time, 2 years part time
MSc Electronic and Electrical Engineering	1 year full time (September intake), 3 years part time (September intake), 16 months full time (January intake)
MSc Electronic and Electrical Engineering (with Professional Experience)	18 months full time
MPhil Energy and Electronic Engineering	2 years full time, 4 years part time
PhD Energy and Electronic Engineering	3 years full time, 6 years part time
MSc Energy and Power Systems Management	1 year full time (September intake), 3 years part time (September intake), 16 months full time (January intake)
MSc Engineering Geology	1 year full time, 2 years part time
MSc Engineering Management	1 year full time (September intake), 3 years part time (September intake), 16 months full time (January intake)
MPhil Mechanical and Design Engineering	2 years full time, 4 years part time
PhD Mechanical and Design Engineering	3 years full time, 6 years part time
MSc Mechanical Engineering	1 year full time (September intake), 3 years part time (September intake), 16 months full time (January intake)
MSc Petroleum and Gas Engineering	1 year full time, 3 years part time

MORE INFORMATION

The majority of courses start in September; all courses with additional start dates are highlighted in the key.

English language requirements — pages 26–27

Fees and funding — pages 34–36

Entry requirements — pages 80–81

For full course details, including tuition fees and start dates, please visit the course pages on our website.

Key to course listings

- Faculty of Business and Law
- Faculty of Creative and Cultural Industries
- Faculty of Humanities and Social Sciences
- Faculty of Science and Health
- Faculty of Technology

Additional start dates
J January

ENGLISH AND CREATIVE WRITING

UNDERGRADUATE

Course title	Duration
BA (Hons) Creative Writing	3 years full time, 4 years sandwich with work placement
BA (Hons) English and Creative Writing	3 years full time, 4 years sandwich with work placement
BA (Hons) English Language and Linguistics	3 years full time, 4 years sandwich with work placement
BA (Hons) English Literature	3 years full time, 4 years sandwich with work placement
BA (Hons) Journalism with Creative Writing	3 years full time, 4 years sandwich with work placement
BA (Hons) Screenwriting	3 years full time, 4 years sandwich with work placement

POSTGRADUATE

Course title	Duration
MPhil Area Studies, History, Politics and Literature	2 years full time, 4 years part time
PhD Area Studies, History, Politics and Literature	3 years full time, 6 years part time
MA Creative Writing	1 year full time, 2 years part time
MRes Humanities and Social Sciences	1 year full time, 2 years part time

FASHION, PHOTOGRAPHY, GRAPHIC ARTS AND DESIGN

UNDERGRADUATE

Course title	Duration
BA (Hons) Fashion Marketing	3 years full time, 4 years sandwich with work placement
BA (Hons) Fashion and Textile Design	3 years full time, 4 years sandwich with work placement
BA (Hons) Graphic Design	3 years full time, 4 years sandwich with work placement
BA (Hons) Illustration	3 years full time, 4 years sandwich with work placement
BA (Hons) Photography	3 years full time, 4 years sandwich with work placement

POSTGRADUATE

Course title	Duration
MPhil Art, Design and Performance	2 years full time, 4 years part time
PhD Art, Design and Performance	3 years full time, 6 years part time
MRes Creative Industries	1 year full time, 2 years part time
MA Fashion Marketing	1 year full time, 2 years part time
MA Fashion Marketing (with Professional Experience)	18 months full time
MA Fashion and Textiles	1 year full time, 2 years part time
MA Graphic Design	1 year full time, 2 years part time
MA Illustration	1 year full time, 2 years part time
MA Photography	1 year full time, 2 years part time

FILM AND TELEVISION

UNDERGRADUATE

Course title	Duration
BA (Hons) Film Production	3 years full time, 4 years sandwich with work placement
BA (Hons) Film Studies	3 years full time, 4 years sandwich with work placement
BA (Hons) Screenwriting	3 years full time, 4 years sandwich with work placement
BA (Hons) Television Production	3 years full time, 4 years sandwich with work placement

MORE INFORMATION

The majority of courses start in September; all courses with additional start dates are highlighted in the key.

English language requirements — pages 26–27

Fees and funding — pages 34–36

Entry requirements — pages 80–81

For full course details, including tuition fees and start dates, please visit the course pages on our website.

Key to course listings

- Faculty of Business and Law
- Faculty of Creative and Cultural Industries
- Faculty of Humanities and Social Sciences
- Faculty of Science and Health
- Faculty of Technology

Additional start dates

January

POSTGRADUATE

Course title	Duration
MRes Creative Industries	1 year full time, 2 years part time
MPhil Film, Media and Communication	2 years full time, 4 years part time
PhD Film, Media and Communication	3 years full time, 6 years part time
MSc Film and Television	1 year full time, 2 years part time

GEOGRAPHY AND ENVIRONMENTAL SCIENCES

UNDERGRADUATE

Course title	Duration
BSc (Hons) Environmental Science	3 years full time, 4 years sandwich with work placement
BSc (Hons) Environmental Science and Management (Dual Degree)	3.5 years full time with a year abroad
BA (Hons) Geography	3 years full time, 4 years sandwich with work placement
BSc (Hons) Geography	3 years full time, 4 years sandwich with work placement
BA (Hons) International Development	3 years full time, 4 years sandwich with work placement
BA (Hons) International Development and Languages	4 years full time with language year abroad
BSc (Hons) Marine Environmental Science	3 years full time, 4 years sandwich with work placement

POSTGRADUATE

Course title	Duration
MSc Coastal and Marine Resource Management	1 year full time, 2 years part time
MSc Crisis and Disaster Management	1 year full time, 2 years part time
MSc Environmental Geology and Contamination	1 year full time, 2 years part time
MPhil Environment, Geography and Geosciences	2 years full time, 4 years part time
PhD Environment, Geography and Geosciences	3 years full time, 6 years part time
MSc Geographical Information Systems	1 year full time, 3 years part time
MSc Geological and Environmental Hazards	1 year full time, 2 years part time
MRes Science and Health	1 year full time, 2 years part time

HEALTH CARE AND SOCIAL CARE

UNDERGRADUATE

Course title	Duration
BSc (Hons) Advancing Professional Practice (Top-up)	2 years part time (Top-up)
BSc (Hons) Biomedical Science	3 years full time, 4 years sandwich with work placement
BSc (Hons) Dental Hygiene	3 years full time
BSc (Hons) Dental Hygiene and Dental Therapy	3 years full time
CertHE Dental Nursing	1 year full time
BSc (Hons) Pharmacology	3 years full time, 4 years sandwich with work placement
MPharm (Hons) Pharmacy	4 years full time
BSc (Hons) Social Work	3 years full time

POSTGRADUATE

Course title	Duration
MSc Advanced Clinical Practice	3 years part time
MSc Applied Exercise Physiology	1 year full time, 2 years part time
DBMS Professional Doctorate in Biomedical Science	4–7 years part time
MSc Clinical Exercise Science	1 year full time, 2 years part time
MD Health and Care Professions	2 years full time, 4 years part time
MPhil Health and Care Professions	2 years full time, 4 years part time
PhD Health and Care Professions	3 years full time, 6 years part time
MSc Health Psychology	1 year full time, 2 years part time
DHealthSci Professional Doctorate in Health Science	4–7 years part time
MSc Medical Biotechnology	1 year full time, 2 years part time

MORE INFORMATION

The majority of courses start in September; all courses with additional start dates are highlighted in the key.

English language requirements — pages 26–27

Fees and funding — pages 34–36

Entry requirements — pages 80–81

For full course details, including tuition fees and start dates, please visit the course pages on our website.

Key to course listings

- Faculty of Business and Law
- Faculty of Creative and Cultural Industries
- Faculty of Humanities and Social Sciences
- Faculty of Science and Health
- Faculty of Technology

Additional start dates

- January
- Course subject to approval

DMedImg Professional Doctorate in Medical Imaging	4–7 years part time
DNursing Professional Doctorate in Nursing	4–7 years part time
DPharm Professional Doctorate in Pharmacy	4–7 years part time
MD Pharmacy and Biomedical Science	2 years full time, 4 years part time
MPhil Pharmacy and Biomedical Science	2 years full time, 4 years part time
PhD Pharmacy and Biomedical Science	3 years full time, 6 years part time
MRes Science and Health	1 year full time, 2 years part time J
MSc Social Work	2 years full time
DSW Professional Doctorate in Social Work	4–7 years part time
MPhil UPDA	2 years full time, 4 years part time
PhD UPDA	3 years full time, 6 years part time

HISTORY, POLITICS AND INTERNATIONAL RELATIONS

UNDERGRADUATE

Course title	Duration
BA (Hons) History	3 years full time, 4 years sandwich with work placement
BA (Hons) International Development	3 years full time, 4 years sandwich with work placement
BA (Hons) International Development and Languages	4 years full time with language year abroad
BA (Hons) International Relations	3 years full time, 4 years sandwich with work placement
BA (Hons) International Relations and Languages	4 years full time with language year abroad
BA (Hons) International Relations and Politics	3 years full time, 4 years sandwich with work placement
BA (Hons) Politics	3 years full time, 4 years sandwich with work placement

MORE INFORMATION

The majority of courses start in September; all courses with additional start dates are highlighted in the key.

English language requirements – pages 26–27

Fees and funding – pages 34–36

Entry requirements – pages 80–81

For full course details, including tuition fees and start dates, please visit the course pages on our website.

Key to course listings

- Faculty of Business and Law
- Faculty of Creative and Cultural Industries
- Faculty of Humanities and Social Sciences
- Faculty of Science and Health
- Faculty of Technology

Additional start dates

J January

POSTGRADUATE

Course title	Duration
MPhil Area Studies, History, Politics and Literature	2 years full time, 4 years part time
PhD Area Studies, History, Politics and Literature	3 years full time, 6 years part time
MRes Humanities and Social Sciences	1 year full time, 2 years part time
MA International Relations	1 year full time, 2 years part time J
MA International Relations and Politics	1 year full-time block delivery, 2 years part-time block delivery J

LANGUAGES

UNDERGRADUATE

Course title	Duration
BA (Hons) Applied Languages	4 years full time with language year abroad
BA (Hons) International Development and Languages	4 years full time with language year abroad
BA (Hons) International Relations and Languages	4 years full time with language year abroad
BA (Hons) Language Studies	3 years full time
BA (Hons) Modern Languages	4 years full time with language year abroad

POSTGRADUATE

Course title	Duration
MA Applied Linguistics and TESOL	1 year full time, 2 years part time J
MA Applied Linguistics and TESOL (with Professional Experience)	2 years full time with work placement J
MRes Humanities and Social Sciences	1 year full time, 2 years part time
MPhil Languages and Applied Linguistics	2 years full time, 4 years part time
PhD Languages and Applied Linguistics	3 years full time, 6 years part time
MA Translation Studies	1 year full time, 2 years part time

LAW

UNDERGRADUATE

Course title	Duration
LLB (Hons) Law	3 years full time, 4 years sandwich with work placement
LLB (Hons) Law with Business	3 years full time, 4 years sandwich with work placement

LLB (Hons) Law with Criminology	3 years full time, 4 years sandwich with work placement
LLB (Hons) Law with Legal Practice	3 years full time, 4 years sandwich with work placement

POSTGRADUATE

Course title	Duration
LLM Corporate Governance and Law/Grad.CG	1 year full time, 30 months part time
LLM Law	1 year full time, 30 months part time
MPhil Law	2 years full time, 4 years part time
PhD Law	3 years full time, 6 years part time
LLM Law and LegalTech	1 year full time, 3 years part time

MATHEMATICS AND PHYSICS

UNDERGRADUATE

Course title	Duration
BSc (Hons) Mathematics	3 years full time, 4 years sandwich with work placement
MMath Mathematics	4 years full time, 5 years sandwich with work placement
BSc (Hons) Mathematics for Finance and Management	3 years full time, 4 years sandwich with work placement
BSc (Hons) Mathematics with Statistics	3 years full time, 4 years sandwich with work placement
BSc (Hons) Physics	3 years full time, 4 years sandwich with work placement
MPhys (Hons) Physics	4 years full time, 5 years sandwich with work placement
BSc (Hons) Physics, Astrophysics and Cosmology	3 years full time, 4 years sandwich with work placement
MPhys (Hons) Physics, Astrophysics and Cosmology	4 years full time, 5 years sandwich with work placement

POSTGRADUATE

Course title	Duration
MPhil Cosmology and Gravitation	2 years full time, 4 years part time
PhD Cosmology and Gravitation	3 years full time, 6 years part time

MSc Logistics and Supply Chain Management	1 year full time (September intake), 17 months full time (January intake)
MPhil Mathematics	2 years full time, 4 years part time
PhD Mathematics	3 years full time, 6 years part time
MPhil Physics	2 years full time, 4 years part time
PhD Physics	3 years full time, 6 years part time

MEDIA AND JOURNALISM

UNDERGRADUATE

Course title	Duration
BA (Hons) Global Communication and Media (Dual Degree)	3.5 years full time with a year abroad
BA (Hons) Journalism	3 years full time, 4 years sandwich with work placement
BA (Hons) Journalism with Creative Writing	3 years full time, 4 years sandwich with work placement
BA (Hons) Journalism with Media Studies	3 years full time, 4 years sandwich with work placement
BA (Hons) Media and Communication with Foundation Year	4 years full time, 5 years sandwich with work placement
BA (Hons) Media Studies	3 years full time, 4 years sandwich with work placement

POSTGRADUATE

Course title	Duration
MRes Creative Industries	1 year full time, 2 years part time
MSc Digital Media	1 year full time, 3 years part time
MPhil Film, Media and Communication	2 years full time, 4 years part time
PhD Film, Media and Communication	3 years full time, 6 years part time
MA Media and Communication	1 year full time, 2 years part time

MORE INFORMATION

The majority of courses start in September; all courses with additional start dates are highlighted in the key.

English language requirements — pages 26–27

Fees and funding — pages 34–36

Entry requirements — pages 80–81

For full course details, including tuition fees and start dates, please visit the course pages on our website.

Key to course listings

- Faculty of Business and Law
- Faculty of Creative and Cultural Industries
- Faculty of Humanities and Social Sciences
- Faculty of Science and Health
- Faculty of Technology

Additional start dates
J January

PSYCHOLOGY AND SOCIOLOGY

UNDERGRADUATE

Course title	Duration
BA (Hons) Childhood and Youth Studies with Psychology	3 years full time, 4 years sandwich with work placement
BSc (Hons) Criminology with Psychology	3 years full time, 4 years sandwich with work placement
BSc (Hons) Forensic Psychology	3 years full time, 4 years sandwich with work placement
BSc (Hons) Psychology	3 years full time, 4 years sandwich with work placement
BSc (Hons) Sociology	3 years full time, 4 years sandwich with work placement
BSc (Hons) Sociology with Criminology	3 years full time, 4 years sandwich with work placement
BSc (Hons) Sociology with Psychology	3 years full time, 4 years sandwich with work placement
BSc (Hons) Sport and Exercise Psychology	3 years full time, 4 years sandwich with work placement

POSTGRADUATE

Course title	Duration
MPhil Education and Sociology	2 years full time, 4 years part time
PhD Education and Sociology	3 years full time, 6 years part time
MSc Forensic Psychology	1 year full time, 2 years part time
MSc Health Psychology	1 year full time, 2 years part time
MPhil Psychology	2 years full time, 4 years part time
PhD Psychology	3 years full time, 6 years part time
MRes Science and Health	1 year full time, 2 years part time
MSc Sport and Exercise Psychology (BPS accredited)	1 year full time, 2 years part time

MORE INFORMATION

The majority of courses start in September; all courses with additional start dates are highlighted in the key.

English language requirements — pages 26–27
Fees and funding — pages 34–36
Entry requirements — pages 80–81

For full course details, including tuition fees and start dates, please visit the course pages on our website.

Key to course listings

- Faculty of Business and Law
- Faculty of Creative and Cultural Industries
- Faculty of Humanities and Social Sciences
- Faculty of Science and Health
- Faculty of Technology

Additional start dates

- January
- Course subject to approval

SPORT SCIENCE

UNDERGRADUATE

Course title	Duration
BSc (Hons) Sport and Exercise Psychology	3 years full time, 4 years sandwich with work placement
BSc (Hons) Sport and Exercise Science	3 years full time, 4 years sandwich with work placement, 6 years part time
BSc (Hons) Sport, Health and Exercise Sciences (Dual Degree)	4 years full time with a year abroad
BSc (Hons) Sport Management	3 years full time, 4 years sandwich with work placement
BSc (Hons) Sport Management (Dual Degree)	4 years full time with a year abroad
BSc (Hons) Sport Management (Top-up)	1 year full time (Top-up)
BSc (Hons) Sports Coaching (Top-up)	1 year full time (Top-up)

POSTGRADUATE

Course title	Duration
MSc Applied Exercise Physiology	1 year full time, 2 years part time
MSc Clinical Exercise Science	1 year full time, 2 years part time
MRes Science and Health	1 year full time, 2 years part time
DProf Professional Doctorate in Sport, Exercise and Health Science	6 years part time
MSc Sport and Exercise Psychology (BPS accredited)	1 year full time, 2 years part time
DProf Professional Doctorate in Sport and Exercise Psychology	6 years part time
MPhil Sport, Health and Exercise Science	2 years full time, 4 years part time
PhD Sport, Health and Exercise Science	3 years full time, 6 years part time
MSc Sport Management	1 year full time with mandatory work-based learning element, 2 years part time with mandatory work-based learning element
MSc Sports Performance	1 year full time, 2 years part time
MSc Strength, Conditioning and Rehabilitation	1 year full time, 2 years part time

Your steps to apply

HERE ARE THE STEPS YOU NEED TO TAKE TO APPLY FOR YOUR COURSE AND GET YOUR VISA ON TIME.

We understand that getting a visa and making arrangements to study with us takes time and we aim to support you where we can. We are here to help you every step of the way – just email global@port.ac.uk with any questions.

STEP 1

Choose the right course

Visit our website and review our courses at www.port.ac.uk/courses. Make sure to check the course entry and English language requirements for your country.

If you have any questions, you can speak to one of our local representatives. For details, see www.port.ac.uk/your-country.



STEP 2

Apply early

You can apply directly to the University for all our courses via the course pages on our website, or through UCAS for undergraduate courses. You can also apply through one of our regional offices or through an education agent.

You can find lots of advice on our website www.port.ac.uk. You do not need to wait for all your documents to be available before you apply – you can send these as soon as you have them.

Check your emails regularly (including your spam folder) as we may need to contact you in order to progress your application.

For creative courses, we may need to review a relevant portfolio of your work. Find out more at www.port.ac.uk/portfolio-guides.

STEP 3

Accept your place

If you are successful, we will send you an offer of a place at the University. If this is 'conditional', it means there is at least one requirement you need to meet before you can join your course. You may be asked for English language qualifications or exam results and/or to pay a deposit.

As soon as you get your offer, you should review your conditions. Contact us if you have any questions. If you are happy with the offer, you can accept it via the Applicant View or UCAS. Accepting your offer means that you have reserved a place on the course. It does not mean that the place is guaranteed; you will still need to meet the conditions of your offer.

If English is one of your conditions, you may want to consider a Pre-Sessional English course. You can study on campus or online. For details go to www.port.ac.uk/pre-sessional-english.



STEP 4

IMPORTANT: Upload documents via Applicant View

Your offer letter will tell you which documents you need to send us in order to meet your conditions. It is very important to upload these as soon as you have them. You can do this via UCAS or your Applicant View. Please check your emails regularly (including your spam folder) for messages from us.



STEP 5

Start looking for your new home

There is plenty of accommodation in Portsmouth to choose from. If you are a first-year student starting in September, we guarantee you a place in halls of residence when you accept our offer to study in Portsmouth and meet accommodation application deadlines.

Check pages 30–33 or visit www.port.ac.uk/accommodation to find out about your accommodation options.

The Student Housing Team will contact you with details about how to apply for halls of residence once you have accepted your offer. You can contact the Student Housing Team at student.housing@port.ac.uk for help and advice on all types of accommodation in the city.



STEP 6

Deposit payments and visa requirements

The conditions of your offer will include completing your visa eligibility requirements and making your deposit payment (or providing a sponsor letter). You can pay your deposit via your Applicant View.

When we have received your payment and all your supporting documentation, we will make your offer unconditional, which means you have a confirmed place on the course.

STEP 7

Confirmation of Acceptance for Studies (CAS) statement

A CAS statement allows you to apply for your visa. We can only send the CAS when your offer is unconditional and you have accepted it.

Check your emails regularly for your CAS statement. If you are applying through an agent, they will also receive a copy.

Once you have your CAS, check it to make sure the details are correct before making your visa application. You can apply for your visa up to six months before the start of your course if you are outside of the UK, and three months before if you are already in the UK. If you need visa advice, visit www.port.ac.uk/visa-advice or email student-visa@port.ac.uk.

STEP 8

Plan your journey to Portsmouth

It is really important that you arrive in time to enjoy the Welcome and Orientation Programme and attend your course induction. For most students, this will be the week before your course start date. If you are not able to arrive in time, you must email global@port.ac.uk.

You can find out about what to expect in your first weeks, at www.port.ac.uk/firstweeks.

To plan your journey to Portsmouth, visit www.port.ac.uk/how-to-get-here. We offer an airport pick-up service from London Heathrow (LHR) on selected dates in September and January. We will email you more details about this closer to the time of your departure.



STEP 9

Start your new life in Portsmouth

Before you arrive, we will send you lots of information and advice. When you arrive, we will help you to settle into the University, find your way around the city and meet lots of people.

Join as many activities as you can during the Welcome and Orientation Programme – make sure you do not miss out on all the fun!

To find out more, go to www.port.ac.uk/newstudents.



How to apply and entry requirements

How to apply

There are several ways you can apply:

- online at www.port.ac.uk/apply
- via our regional offices and advisers in Delhi, Dhaka, Kuala Lumpur, Lagos, Lahore, Nairobi and Shanghai
- through an agent – find agents operating in your country by visiting www.port.ac.uk/your-country
- via UCAS by visiting www.ucas.com or calling +44 (0)330 3330 230

We welcome students who have the potential to complete their course and contribute to University life regardless of age, background or financial circumstances. We treat every application fairly in accordance with our admissions policy.

Please note

- Part-time study at postgraduate level is permitted on the Student Route visa. The restrictions for part-time study on this visa are: no dependants; no work; no work placements.
- Some courses may require a Disclosure and Barring Service (DBS) check, and/or occupational health screening. Please check with the department if an approved alternative is accepted.
- Some of our courses are only offered to practising UK professionals. Where this is the case, it will be indicated on the course page on our website.
- Please check the website for details of entry requirements for individual courses.
- Some courses may require an ATAS (Academic Technology Approval Scheme) certificate – this will be stated in the conditions of your offer.
- Some of our courses require an interview. These can be conducted online where you are unable to attend in person.

Entry requirements

General entry requirements

For undergraduate study, we will normally expect you to have the equivalent of two to three A levels in appropriate subjects. Please check the course pages on our website for specific entry requirements. We also normally require a minimum of three GCSE passes or equivalent in subjects other than those offered at A level. GCSE passes relate to grades C/4 and above. GCSE English and Mathematics are also normally required.

For postgraduate study, entry requirements will depend on your chosen course. Please visit our website for course-specific entry requirements.

English language requirements

If your first language is not English, the minimum English language proficiency level for undergraduates ranges from IELTS band 6.0 overall with no component score below 5.5, to band 6.5 overall with no component score below 6.0 or equivalent, or GCSE/IGCSE English Language minimum grade C/4. For most of our Master's degrees, you need a minimum of IELTS band 6.5–7.0, with no component below 6.0. Some courses and PhDs require higher scores.

You will find a full list of acceptable English language qualifications at www.port.ac.uk/englishlanguage.

Please note, the UK Visas and Immigration Office regularly make changes to the immigration rules and requirements, so there may be changes to our requirements after this guide is published.

Commonly accepted qualifications

We accept a range of international and EU qualifications – see below for examples and visit www.port.ac.uk/your-country for country-specific entry requirements.

- A levels and AS levels
- BTEC qualifications
- Bachelor's degree
- Access to Higher Education
- Irish Leaving Certificate
- Cambridge Pre-U
- China: one year of higher education study or International Foundation Year (IFY)
- Cypriot Apolytiron of Lykeion
- East African Certificate of Education (EACE)
- European Baccalaureate
- French Baccalaureate
- Hong Kong Diploma of Secondary Education (HKDSE)
- International Baccalaureate Diploma
- Malaysian SPM
- Master's degree
- WAEC WASSCE/NECO SSCE plus a recognised International Foundation Year (IFY) or OND/HND
- Thawawaya/Tawjihiyah/Thanawiya (General Secondary School Certificate) plus a recognised International Foundation Year (IFY)
- USA: High School Diploma plus Advanced Placement Exams (APS)

The range of qualifications that can be taken is so large that we do not print all individual qualification requirements, but you can find these on our website or the UCAS website.

Application deadline guidance

- Direct applications for undergraduate and postgraduate courses are considered all year round – but we advise you to apply as early as possible in order to have sufficient time to secure a student visa. Certain courses and countries will have application deadlines. Please contact globaladmissions@port.ac.uk for course-specific deadlines.
- UCAS Applications – typically 15 January. International applications received after this date will still be considered, but we cannot guarantee that places will be available. Applications received from 30 June will automatically be entered into the UCAS Clearing scheme.
- University Pre-Sessional English courses – deadlines for applications to these courses are typically two weeks before the start of the course. For more information, please see page 27, visit www.port.ac.uk/pre-sessional-english or contact pse@port.ac.uk.

Terms and conditions

IT IS IMPORTANT THAT YOU READ AND MAKE SURE YOU UNDERSTAND THIS INFORMATION WHICH FORMS PART OF THE TERMS AND CONDITIONS OF YOUR STUDIES SHOULD YOU CHOOSE TO STUDY AT PORTSMOUTH.

We (the University of Portsmouth) have checked the information in this guide and believe that it is accurate at the time of going to press (June 2022). However, it is possible that some course details may change over time, either where the changes are unavoidable through, for example, staff changes, where changes to the mode of delivery are required to deal with emergency situations such as the COVID-19 pandemic or where it is believed that the changes would be beneficial to the course, such as updating the course content to reflect changes in the discipline or the industry. The University will take all reasonable steps to minimise the impact of any changes on students and will always ensure that students receive the same standard of service.

Applicants for such courses will be informed of any significant changes, such as course content changes, with as much notice as possible, so the effects of any changes can be considered by you. You are advised to check the University website for the most up-to-date information at all times, and/or to contact the University for further details if you are at any time uncertain of information.

Agreeing to our terms and conditions

When you accept an offer to study at the University of Portsmouth, you also agree to our Student

Contract as well as the University's policies, rules and regulations. You can read the Student Contract at www.port.ac.uk/terms.

Note that our policies, rules and regulations may change at the start of any academic year. The most up-to-date versions can be found at www.port.ac.uk/terms. It is best to be aware of these documents and to read them before you accept your offer of a place. This is so you understand the commitment you are making and what you can expect from the University.

If you would like more information on how we process your application, there is more on our undergraduate applications, postgraduate applications or international applications pages online.

Tuition fee terms and conditions

The information on our website for each course includes tuition fee terms and conditions. This sets out in detail how tuition fees are calculated, increased and charged. It may be necessary, on some courses, to pay extra costs in relation to fieldtrips/ study visits etc. If this is the case, this information will be available on the Undergraduate Fees and Student Finance page of the University website.

As above, you are advised, at all times, to check the University

website for the most up-to-date information on tuition and other fees. For the latest information, visit www.port.ac.uk/feesandfunding.

Courses 'subject to approval'

Courses advertised as 'subject to approval' have successfully completed the first stage of the course approval process. However, the full academic detail is subject to consideration and approval by the University in the second and final stage of the approval process, which happens after this publication is printed. Applicants for such courses will be informed of any significant changes to the advertised course as soon as possible during the application process so that you may make an informed choice about the course.

Where a change to the course content and/or fees has a material adverse impact on you, you will be entitled to terminate your obligations to the University.

Your responsibility

It is your responsibility to confirm that the course you wish to study is suitable for your needs (particularly any additional needs/disabilities you might have), interests and abilities, and that the service, support and facilities provided by the University of Portsmouth meet your requirements. If you accept the offer of a place on one of our courses but later decide

that you wish to change or withdraw from your course of study, without there being any changes to the course for which you applied, the responsibility for doing so and for any costs that you may incur is yours alone.

The University will provide its services to you with all due care and skill. We do not accept responsibility if we are unable to fulfil our teaching commitments at all through circumstances beyond our control. These include (by way of example but not limitation) illness, industrial action, pandemic and/or epidemic, travel restrictions, civil emergencies or the actions of third parties. We will always try, however, where possible, to make alternative arrangements to fulfil our commitments to you.

Brexit

The United Kingdom's withdrawal from the European Union may mean that courses which are accredited by professional bodies are not recognised within the EU in the same way as they have been historically. If you have any queries in relation to the impact of Brexit on your specific course, please contact the University and we will be happy to give you guidance and information relevant to your circumstances.

Contact us

Please get in contact if there is anything at all we can help you with. There are numerous ways of getting in touch.

University of Portsmouth Global

T +44 (0)23 9284 3488
E global@port.ac.uk
W www.port.ac.uk

Admissions enquiries

The Global Admissions Team is available to support you through the application process.

T +44 (0)23 9284 5113
E globaladmissions@port.ac.uk

Delhi, India

T +91 956 039 6002
E india-office@port.ac.uk

Lahore, Pakistan

T +9234 5005 5109
E pakistan@port.ac.uk

Dhaka, Bangladesh

T +880 130 964 2651
E bangladesh@port.ac.uk

Nairobi, Kenya

T +254 726 490347
E emily.chepkosgei@port.ac.uk

Kuala Lumpur, Malaysia

E seao@port.ac.uk

Shanghai, China

T +86 216319 1155
E china.office@port.ac.uk
W www.universityofportsmouth.cn

Lagos, Nigeria

T +234 (0) 807 680 1798
E chinelo.konwea@port.ac.uk

Course index

A-Z

A

Accountancy and Financial Management (Top-up) BA (Hons)	54
Accounting with Finance BA (Hons)	54
Advancing Professional Practice (Top-up) BSc (Hons)	69
Animation BA (Hons)	60
Applied Languages BA (Hons)	71
Architecture BA (Hons)	55

B

Biochemistry BSc (Hons)	56
Biology BSc (Hons)	56
Biomedical Science BSc (Hons)	56, 69
Building Surveying BSc (Hons)	55
Business and Human Resource Management BA (Hons)	57
Business and Management BA (Hons)	57
Business Management and Entrepreneurship BA (Hons)	57
Business and Supply Chain Management BSc (Hons)	57
Business with Business Communication (Top-up) BA (Hons)	57

C

Childhood and Youth Studies BA (Hons)	59
Childhood and Youth Studies with Criminology BA (Hons)	59, 62
Childhood and Youth Studies with Psychology BA (Hons)	59, 74
Civil Engineering BEng (Hons)	64
Civil Engineering MEng	64

Computer Animation and Visual Effects BSc (Hons)	60
Computer Games Art BA (Hons)	60
Computer Games Design BA (Hons)	60
Computer Games Production BSc (Hons)	60
Computer Games Technology BSc (Hons)	60
Computer Networks BSc (Hons)	61
Computer Science BSc (Hons)	61
Computer Science MEng	61
Computing BSc (Hons)	61
Construction Engineering Management BEng (Hons)	64
Counter Terrorism, Intelligence and Cybercrime (Dual Degree) BSc (Hons)	62
Creative Computing with Foundation Year BA (Hons)	60
Creative Computing with Foundation Year BSc (Hons)	60
Creative Media Technologies BSc (Hons)	60
Creative Media Technologies (L6 Top-up) BSc (Hons)	60
Creative Music Technology (Top-up) BA (Hons)	60
Creative Writing BA (Hons)	66
Criminology and Criminal Justice BSc (Hons)	62
Criminology and Cybercrime BSc (Hons)	62
Criminology and Forensic Studies BSc (Hons)	62
Criminology with Environmental Justice BSc (Hons)	62
Criminology with Psychology BSc (Hons)	62, 74
Cyber Security and Forensic Computing BSc (Hons)	61, 62

D

Data Science and Analytics BSc (Hons)	61
Dental Hygiene BSc (Hons)	69
Dental Hygiene and Dental Therapy BSc (Hons)	69
Dental Nursing CertHE	69
Digital Marketing BA (Hons)	57
Drama and Performance BA (Hons)	63

E

Early Childhood Studies BA (Hons)	59
Economics BSc (Econ) (Hons)	54
Economics, Finance and Banking BSc (Econ) (Hons)	54
Economics and Management BA (Hons)	54
Education Studies (Top-up) BA (Hons)	59
Electronic Engineering BEng (Hons)	64
Electronic Engineering MEng	64
Engineering and Technology with Foundation Year BEng (Hons)	64
English and Creative Writing BA (Hons)	66
English Language and Linguistics BA (Hons)	66
English Literature BA (Hons)	66
Environmental Science BSc (Hons)	68
Environmental Science and Management (Dual Degree) BSc (Hons)	68

F

Fashion Marketing BA (Hons)	57, 66
Fashion and Textile Design BA (Hons)	66
Film Production BA (Hons)	67
Film Studies BA (Hons)	67
Finance with Business Communication (Top-up) BA (Hons)	54
Financial Management BA (Hons)	54
Forensic Psychology BSc (Hons)	62, 74
Further Education and Training CertEd	59

G

Geography BA (Hons)	68
Geography BSc (Hons)	68
Geology BSc (Hons)	63
Global Communication and Media (Dual Degree) BA (Hons)	73
Graphic Design BA (Hons)	66

H

History BA (Hons)	70
--------------------------	----

I

Illustration BA (Hons)	66
Interactive Technologies BSc (Hons)	60
Interior Architecture and Design BA (Hons)	55
International Business BA (Hons)	57
International Business Communication (Top-up) BA (Hons)	57
International Development BA (Hons)	68, 70
International Development and Languages BA (Hons)	68, 70, 71
International Relations BA (Hons)	70
International Relations and Languages BA (Hons)	70, 71
International Relations and Politics BA (Hons)	70
International Trade and Business Communication (Top-up) BA (Hons)	57
International Trade, Logistics and Business Communication (Top-up) BA (Hons)	57

J

Journalism BA (Hons)	73
Journalism with Creative Writing BA (Hons)	66, 73
Journalism with Media Studies BA (Hons)	73

L

Language Studies BA (Hons)	71
Law LLB (Hons)	71
Law with Business LLB (Hons)	57, 71
Law with Criminology LLB (Hons)	62, 72
Law with Legal Practice LLB (Hons)	72

M

Marine Biology BSc (Hons)	56
Marine Environmental Science BSc (Hons)	68
Marketing BA (Hons)	57
Mathematics BSc (Hons)	72
Mathematics MMath	72
Mathematics for Finance and Management BSc (Hons)	54, 72
Mathematics with Statistics BSc (Hons)	72
Mechanical Engineering BEng (Hons)	64
Mechanical Engineering MEng	64
Mechanical and Manufacturing Engineering BEng (Hons)	64
Media and Communication with Foundation Year BA (Hons)	73
Media Studies BA (Hons)	73
Modern Languages BA (Hons)	71
Musical Theatre BA (Hons)	63
Music Technology BSc (Hons)	60, 63

Course index

A-Z

UNDERGRADUATE

POSTGRADUATE

P

Palaeontology BSc (Hons)	63
Pharmacology BSc (Hons)	69
Pharmacy MPharm (Hons)	69
Photography BA (Hons)	66
Physics BSc (Hons)	72
Physics MPhys (Hons)	72
Physics, Astrophysics and Cosmology BSc (Hons)	72
Physics, Astrophysics and Cosmology MPhys (Hons)	72
Politics BA (Hons)	70
Primary Education with Qualified Teacher Status BA (Hons)	59
Product Design and Innovation BSc (Hons)	64
Professional Policing BSc (Hons)	62
Property Development BSc (Hons)	55
Psychology BSc (Hons)	74

Q

Quantity Surveying BSc (Hons)	55
--------------------------------------	----

R

Renewable Energy Engineering BEng (Hons)	64
Renewable Energy Engineering MEng	64

S

Screenwriting BA (Hons)	66, 67
Social Work BSc (Hons)	69
Sociology BSc (Hons)	74
Sociology with Criminology BSc (Hons)	62, 74
Sociology with Psychology BSc (Hons)	74
Software Engineering BSc (Hons)	61, 64

Sport and Exercise Psychology BSc (Hons)	74, 75
Sport and Exercise Science BSc (Hons)	75
Sport, Health and Exercise Sciences (Dual Degree) BSc (Hons)	75
Sport Management BSc (Hons)	75
Sport Management (Dual Degree) BSc (Hons)	75
Sport Management (Top-up) BSc (Hons)	75
Sports Coaching (Top-up) BSc (Hons)	75

T

Television Production BA (Hons)	67
--	----

V

Virtual and Augmented Reality BSc (Hons)	60
---	----

A

Accounting and Data Analytics MSc	54
Accounting and Finance MSc	54
Accounting and Financial Management MPhil	54
Accounting and Financial Management PhD	54
Advanced Clinical Practice MSc	69
Advanced Manufacturing MSc	65
Applied Aquatic Biology MSc	56
Applied Exercise Physiology MSc	69, 75
Applied Linguistics and TESOL MA	71
Applied Linguistics and TESOL (with Professional Experience) MA	71
Architecture MArch	55
Architecture Final Examination in Professional Practice (Part 3)	55
Architecture International Professional Practice (Part 3)	55
Architecture MPhil	55
Architecture PhD	55
Area Studies, History, Politics and Literature MPhil	66, 71
Area Studies, History, Politics and Literature PhD	66, 71
Art, Design and Performance MPhil	63, 67
Art, Design and Performance PhD	63, 67

B

Biological Sciences MPhil	56
Biological Sciences PhD	56
Biomedical Science DBMS Professional Doctorate in	69

Biotechnology MSc	56
Building Information Management MSc	55
Business Administration DBA Professional Doctorate in	57
Business Communication for International Leadership MA	57
Business Communication for International Leadership (with Professional Experience) MA	57
Business and Management MSc	57

C

Civil Engineering MSc	65
Civil Engineering and Surveying MPhil	65
Civil Engineering and Surveying PhD	65
Clinical Exercise Science MSc	69, 75
Coastal and Marine Resource Management MSc	68
Computer Network Administration and Management MSc	61
Computing MPhil	61
Computing PhD	61
Conservation Architecture MA	55
Construction Project Management MSc	65
Corporate Governance and Law/Grad.CG LLM	72
Cosmology and Gravitation MPhil	72
Cosmology and Gravitation PhD	72
Creative Industries MRes	56, 63, 67, 68, 73
Creative Technologies MA	61
Creative Technologies MSc	61
Creative Technologies MPhil	61

Creative Technologies PhD	61
Creative Writing MA	66
Criminal Justice MSc	62
Criminal Justice DCrimJ Professional Doctorate in	63
Criminal Justice Studies MPhil	63
Criminal Justice Studies PhD	63
Crisis and Disaster Management MSc	68
Cyber Security and Forensic Information Technology MSc	61, 63

D

Data Analytics MSc	61
Data Analytics (with Professional Experience) MSc	61
Digital Business Management MSc	57
Digital Marketing MA	58
Digital Media MSc	73

E

Economics and Finance MPhil	54
Economics and Finance PhD	54
Economics, Finance and Banking MSc	54
Education EdD Professional Doctorate in	59
Educational Leadership and Management PgCert	59
Educational Leadership and Management PgDip	59
Educational Leadership and Management MSc	59
Education and Sociology MPhil	59, 74
Education and Sociology PhD	59, 74



... Course subject to approval

Course index

A-Z

E... Continued

Education Studies MA	59
Electronic and Electrical Engineering MSc	65
Electronic and Electrical Engineering (with Professional Experience) MSc	65
Energy and Electronic Engineering MPhil	65
Energy and Electronic Engineering PhD	65
Energy and Power Systems Management MSc	65
Engineering Geology MSc	64, 65
Engineering Management MSc	65
Environmental Geology and Contamination MSc	64, 68
Environment, Geography and Geosciences MPhil	64, 68
Environment, Geography and Geosciences PhD	64, 68

F

Fashion Marketing MA	58, 67
Fashion Marketing (with Professional Experience) MA	58, 67
Fashion and Textiles MA	67
Film, Media and Communication MPhil	68, 73
Film, Media and Communication PhD	68, 73
Film and Television MSc	68
Finance MSc	55
Forensic Accounting MSc	55
Forensic Psychology MSc	63, 74

G

Geographical Information Systems MSc	68
Geological and Environmental Hazards MSc	64, 68
Graphic Design MA	67

H

Health and Care Professions MD	69
Health and Care Professions MPhil	69
Health and Care Professions PhD	69
Health Psychology MSc	69, 74
Health Science DHealthSci Professional Doctorate in	69
Humanities and Social Sciences MRes	59, 63, 66, 71
Human Resource Development (Top-up) MSc	58
Human Resource Management PgDip	58
Human Resource Management MSc	58
Human Resource Management (Top-up) MSc	58

I

Illustration MA	67
Information Systems MSc	61
Innovation Management and Entrepreneurship MSc	58
Interior Architecture and Design MA	56
International Business and Management MSc	58
International Criminal Justice MSc	63

International Criminal Justice (with Professional Experience) MSc	63
International Finance and Banking MSc	55
International Human Resource Management MSc	58
International Marketing MA	58
International Relations MA	71
International Relations and Politics MA	71

L

Languages and Applied Linguistics MPhil	71
Languages and Applied Linguistics PhD	71
Law LLM	72
Law MPhil	72
Law PhD	72
Law and LegalTech LLM	72
Leadership and Management (Top-up) MSc	58
Logistics and Supply Chain Management MSc	73

M

Marketing MPhil	58
Marketing PhD	58
Marketing Analytics MA	58
Mathematics MPhil	73
Mathematics PhD	73
Mechanical and Design Engineering MPhil	65
Mechanical and Design Engineering PhD	65

Mechanical Engineering MSc	65
Media and Communication MA	73
Medical Biotechnology MSc	56, 69
Medical Imaging DMedImg Professional Doctorate in	70

N

Nursing DNursing Professional Doctorate in	70
---	----

O

Occupational Health, Safety and Environmental Management MSc	58
Occupational Health and Safety Management MSc	58
Operations and Systems Management MPhil	58
Operations and Systems Management PhD	58
Organisation Studies and Human Resource Management MPhil	58
Organisation Studies and Human Resource Management PhD	58

P

Petroleum and Gas Engineering MSc	65
Pharmacy DPharm Professional Doctorate in	70
Pharmacy and Biomedical Science MD	70
Pharmacy and Biomedical Science MPhil	70
Pharmacy and Biomedical Science PhD	70

Photography MA	67
Physics MPhil	73
Physics PhD	73
Project Management MSc	58
Psychology MPhil	74
Psychology PhD	74

Q

Quantity Surveying MSc	56
-------------------------------	----

R

Real Estate Management MSc	56
Risk, Crisis and Resilience Management MSc	58

S

Science and Health MRes	56, 64, 68, 70, 74, 75
Security Risk Management DSyRM Professional Doctorate in	63
Social Work MSc	70
Social Work DSW Professional Doctorate in	70
Sport, Exercise and Health Science DProf Professional Doctorate in	75
Sport and Exercise Psychology (BPS accredited) MSc	74, 75
Sport and Exercise Psychology DProf Professional Doctorate in	75
Sport, Health and Exercise Science MPhil	75
Sport, Health and Exercise Science PhD	75

Sport Management MSc	75
Sports Performance MSc	75
Strategic Leadership MBA	58
Strategy, Enterprise and Innovation MPhil	58
Strategy, Enterprise and Innovation PhD	58
Strength, Conditioning and Rehabilitation MSc	75
Sustainable Cities MA	56

T

Theatre: Socially Engaged Practice MA	63
Translation Studies MA	71

U

UPDA MPhil	70
UPDA PhD	70

Getting to Portsmouth

PORTSMOUTH HAS GREAT LINKS WITH ALL OF LONDON'S MAJOR AIRPORTS, SO IT IS EASY TO GET HERE.

Coach

Portsmouth's main coach stops are:

- The Hard
- Portsmouth International Port
- University of Portsmouth, Cambridge Road

Sea

Sailings to/from:

- Isle of Wight
- France
- Spain
- Channel Islands

Rail

Portsmouth has three major train stations:

- Portsmouth and Southsea
- Portsmouth Harbour
- Fratton

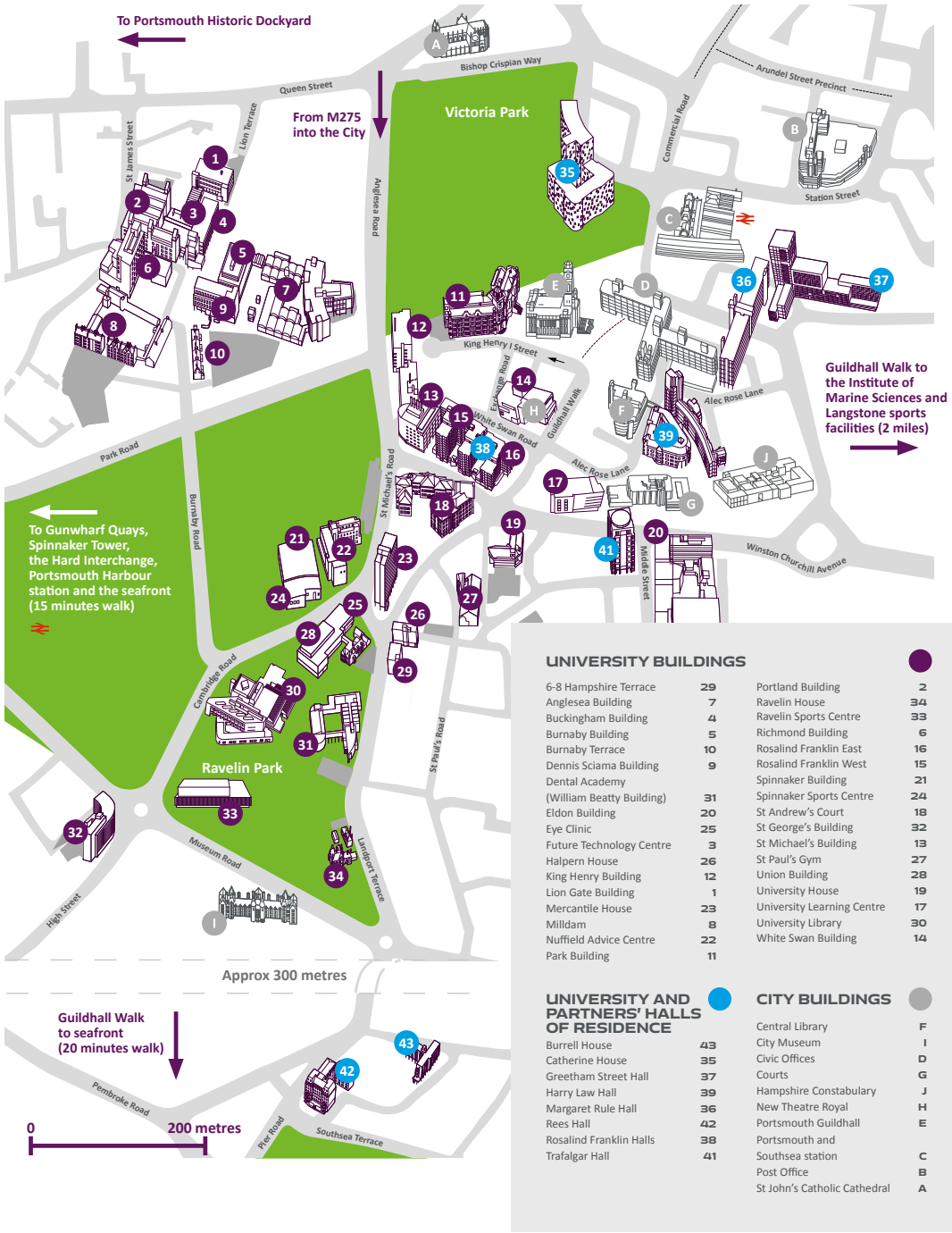
Air

Our closest major airports are:

- Southampton (SOU)
- London Gatwick (LGW)
- London Heathrow (LHR)

Visit our website for more information on how to get to Portsmouth from the airport and by rail
www.port.ac.uk/how-to-get-here

Email globaleport.ac.uk to organise a campus tour with one of our student ambassadors.





HOW GOOD IS YOUR GUIDE?

- It is printed on 100 per cent recycled paper using vegetable-based inks
- The laminate is made from sustainable wood pulp and is fully recyclable
- The printers we use are accredited to environmental standards

All better for the planet - and that is good for all of us.

Find out more at [**www.port.ac.uk/greenprint**](http://www.port.ac.uk/greenprint)

Contact us

T +44 (0)23 9284 3488

E global@port.ac.uk

[**www.port.ac.uk**](http://www.port.ac.uk)



@UoPGlobal



@UoPGlobal



@UoPGlobal



UniversityofPortsmouthGlobal