

INTERNATIONAL
GUIDE

20
24



UNIVERSITY OF LEEDS



Our campus by the city.

Parkinson Building

The iconic landmark building of the University

Laidlaw Library

Designed for our undergraduate students

North-east quarter

Brings together engineering, computing and physical sciences

St George's Field

A beautiful green space in the heart of campus

The Edge

Swimming pool, gym and sports halls

Edward Boyle Library

Includes a postgraduate-only Research Hub

Leeds University Union

Shops, cafés, music venues and home to our clubs and societies

Western campus

Home to our Business School and School of Law

International events

Find out more about our
virtual and in-country events
www.leeds.ac.uk/visitstoyourcountry



Contents

Welcome to Leeds	4	Leeds and Yorkshire	32
Be inspired	6	Introducing Leeds	33
Research that makes a difference	7	City life	34
Research-based learning	9	Living in Leeds	38
Inspirational teaching	10	Your study options	40
Leading research facilities	11	International foundation year routes	41
Your learning environment	12	Undergraduate courses	42
Your future career	14	Masters courses	42
Develop your employability	15	Postgraduate research	42
An international community	22	Our subject areas and courses	43
International student support	23	Postgraduate research opportunities	56
Campus life	25	Next steps	57
On campus	26	Costs to consider	58
Your students' union	28	Funding	59
Sport and fitness	29	Your application	60
Wellbeing and support	30	How to apply	62
		Notes	67
		Map and how to find us	68

IMPORTANT INFORMATION

Information provided by the University, such as in presentations, University brochures and on the University website, is accurate at the time of first disclosure. However, courses, University services and content of publications remain subject to change. Changes may be necessary to comply with the requirements of accrediting bodies or to keep courses contemporary through updating practices or areas of study. Circumstances may arise outside the reasonable control of the University leading to required changes. Such circumstances include industrial action, unexpected student numbers, significant staff illness (where a course is reliant upon a person's expertise), unexpected lack of funding, severe weather, fire, civil disorder, political unrest, government restrictions and serious concern with regard to the transmission of serious illness making a course unsafe to deliver. After a student has taken up a place with the University, the University will look to give early notification of any changes and try to minimise their impact, offering suitable alternative arrangements or forms of compensation where it believes there is a fair case to do so. The latest key information on courses, entry requirements and fees can be found at courses.leeds.ac.uk and www.leeds.ac.uk/pgtr. Please check these websites before making any decisions.



Welcome to Leeds

Come and join us in one of the UK's most diverse and student-friendly cities. Be part of a world top 75 university, with excellent teaching and a focus on your future.

The University of Leeds is a leading UK university, established in 1904. We're a global community, so you'll have chance to meet and work with staff and students from all over the world.

We'll help you reach your potential by:

- challenging you academically and personally
- helping you develop the skills needed for employability
- supporting you every step of the way

Find the course or postgraduate research opportunity for you at courses.leeds.ac.uk and www.leeds.ac.uk/pg

Top 75
university in
the world

QS World University
Rankings 2024



Find out more

Attend an event

Explore subject areas, meet our staff and chat to students at our virtual events and in-person events and fairs.

www.leeds.ac.uk/international-meet-us

Explore our campus

Get active, socialise with friends, relax in the great outdoors or visit a gallery. There's something for everyone and it's all in one place. Take a look at everything our campus has to offer.

www.leeds.ac.uk/around-campus

Chat to our students

Learn about life at Leeds from current students, through chat, blog posts and live events.

www.leeds.ac.uk/linktoleeds

Talk to a representative in your country

We have:

- offices in China, Nigeria, India and Malaysia
- a global network of representatives who can advise you about applying to study with us

www.leeds.ac.uk/meetus

Contact us

study@leeds.ac.uk

Connect with us



Be inspired.

Learn from experts, make an impact and shape the world around you for years to come.

Over 90%
of our research
submitted was rated
'world leading' or
'internationally
excellent'

REF 2021

Research that makes a difference

Our research tackles the big issues affecting today's world. Here are some of the ways our discoveries are making a real difference to society.

Discover more about our leading research
www.leeds.ac.uk/research



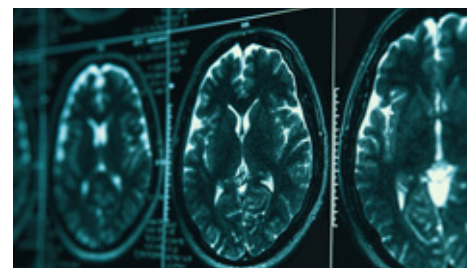
Seasonal speed-up of Antarctic glaciers

A team of researchers, led by Leeds scientists, are tracking the faster flow of glaciers into the waters around the Antarctic during the summer, using satellite data to understand the impact on sea level rise.



Deepfakes are a centuries-old problem

Leeds research argues that photos and videos have been subject to manipulation since the late 1800s, long before digital technology, suggesting they're a social rather than technological problem.



Targeting treatment of cancer cells

A Leeds researcher has been involved in developing a new technology which can measure oxygen levels in tumours in real time, potentially offering better targeted treatment of certain cancer cells.



Improving urban sanitation worldwide

We've developed a toolkit to help governments around the world plan better designed urban sanitation systems, which has improved the lives of almost 200 million people so far.

“

My lecturers were involved in the latest robotics research that impacts our lives in a big way. I learnt the theory in the classroom and then applied it practically in the lab. I enjoyed the hands-on element of working with electronics and mechanics. For one of my projects I designed a robotic arm for a drone that could pick up and place objects. It's great how you can think outside the box at Leeds.

Jefferson Sanchez

Pictured in the National Instruments Active Learning Laboratory

Shaped by research.

Studying a degree that crossed different disciplines helped Jefferson to develop a deep understanding of his subject and bring his own inventions to life.



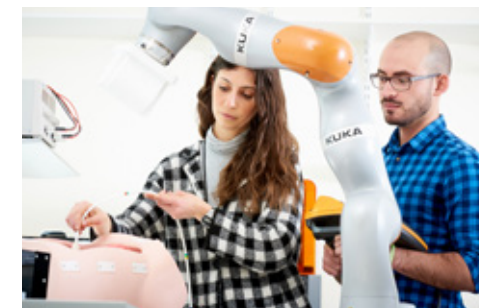
Research-based learning

You'll join a leading UK research university and one of the top 75 universities in the world (QS World University Rankings 2024).

We're a founding member of the prestigious Russell Group of 24 research-intensive universities. This means research will be at the heart of your learning at Leeds, whatever your level of study.

Our courses are designed and taught by staff who are experts in their fields. Their research feeds directly into your course, so you can hear about the latest breakthroughs, even before they're published.

It's a collaborative culture, encouraging researchers at Leeds to connect across and within disciplines.



Undergraduate and Masters students

As an undergraduate or Masters student, you'll carry out a research project, which gives you the chance to develop and apply your research skills and make your own discoveries. We'll encourage you to develop a researcher mindset – investigating, questioning and improving.

Postgraduate researchers

As a postgraduate researcher, you can be confident you'll have structured supervision that challenges and supports you. Our Doctoral College connects you with other researchers and puts you in touch with the services, guidance and opportunities you'll need.



Inspirational teaching

We'll encourage you to challenge and question, and to be an active partner in your own learning.

You'll study among inspirational academics, world experts who share your passion for your subject.

Your learning experience

We'll work in partnership with you, learning, debating and exploring new knowledge together.

In addition to your learning and teaching on campus, you'll also benefit from a variety of digital technologies to enhance your learning experience.

At undergraduate level, there are opportunities to broaden your learning through exploring our discovery modules that span different disciplines and themes.

We'll help you reach your full potential at Leeds. When you leave us, you'll be ready to make an impact in the world.

Digital learning

You'll benefit from:

- the latest digital learning technology in some teaching spaces, so you can work with other students and interact with your lecturers
- access to video and audio recordings of most of your lectures and other learning activities through our Virtual Learning Environment

Academic support

There's lots of support to help you adjust to studying here, through:

- English language support, available before you start and while you're studying – see page 13 and 61
- academic study skills advice and workshops – see page 12 and 18
- your personal tutor (undergraduate and Masters) or supervisor (postgraduate research)

Leading research facilities

Enhance your learning with the outstanding facilities of a leading research-intensive university.

We're continually investing in our campus to make sure you benefit from the very best facilities and the data and insights they provide.

Whatever your specialism, we'll encourage you to collaborate with others in different disciplines to create new knowledge and insights.



Special Collections

The University's Special Collections contains rare books, manuscripts and artworks for primary research.



Laboratories and clinical facilities

Science, technology, engineering and maths students can develop their knowledge and techniques using industry-standard clinical and laboratory facilities.



M&S Company Archive

The archive of this well-known British company is housed on campus and offers exciting research opportunities across disciplines, from business to textiles.



Studio, workshop and performance spaces

Art, design, theatre and music students can refine their skills in fully equipped studios, workshops and performance spaces.

Explore campus
www.leeds.ac.uk/around-campus



Your learning environment

You'll find everything you need to support your studies. We're continually investing in our campus – from new laboratories and lecture theatres to one of the most impressive libraries in the UK.

Libraries

The University Library is one of the UK's major academic research libraries. You'll have access to four libraries on campus, each offering a different working environment to suit how you want to work. They're all equipped with the latest technology and have spaces for group and individual study.

Our Laidlaw Library was purpose-built for undergraduate students. The Research Hub in the Edward Boyle Library is a dedicated space for researchers and postgraduates, with extra-large study desks – especially useful when writing up your research. The Brotherton Library is our oldest library, a beautiful historic space in which you can work and access rare books and manuscripts in the Brotherton Research Centre.

You can also benefit from friendly advice and academic skills support from expert library staff.
library.leeds.ac.uk



Computers and software

High-speed wi-fi across campus and 24-hour computer clusters let you study when you like, wherever you like, on campus. Teaching spaces with the latest digital technology help you learn collaboratively and interactively.

Collaboration tools, like Teams, Zoom and China Connect, allow you to connect from anywhere.

You'll have access to a range of standard and specialist software, including Office 365, linked to your University account and available anywhere. You can access personalised content (like your timetable and library record) through the UniLeeds app.

You can get lots of help and support from our IT Service Desk.

it.leeds.ac.uk



English and other languages

Improve your academic English with the University's Language Centre. A pre-sessional course can help you meet the English language requirements of your undergraduate or postgraduate course and prepare for study in the UK (see page 61).

Once you've started studying with us, you can access learning materials from our Language Zone in different languages, including English. As well as a study and resource centre on campus, we offer online advice and digital resources, and language learning activities to help you study – all for free.

We also provide free English language workshops and one-to-one consultations alongside your degree.

www.leeds.ac.uk/languagecentre

Explore campus
www.leeds.ac.uk/around-campus

Your future career.

You're focused on your future. We are too. Make the most of everything Leeds offers to help you succeed.



6th
most targeted
UK university
by graduate
recruiters

The Graduate Market in 2023
High Fliers Research

Develop your employability

We understand that developing your employability alongside your academic studies is a priority. You'll have lots of opportunities to build your practical and transferable skills, and to benefit from careers events and advice.

We design our courses to be relevant to industry through:

- well-established links with leading organisations
- work placement opportunities and talks by industry experts
- tutors, who are also industry consultants and practitioners, sharing their experience with you
- professional accreditation and industrial advisory boards, which ensure courses meet employer needs

The academic school which runs your course can tell you about its employability focus.

“

My placement, as a campaigns coordinator, was advertised on the University's Careers Service website and staff helped me prepare my application. I learned piano for eight years, so finding this opportunity was incredible! It also gave me the chance to work in the arts, which I've loved. I've realised it's what I want to do. I've developed so many useful skills, such as leadership, project management and networking, and gained so much confidence too. Now I can't wait for the competition to happen!

Vaiva Paulauskaite

Pictured in the
University's School
of Music

Hitting the right note.

A placement year at Leeds International Piano Competition helped Vaiva develop her skills and find her career path.



Gain practical experience

Build your skills and understanding through:

- project work, fieldwork or work placements – included in many of our undergraduate and postgraduate courses
- short placement or internship opportunities outside your course – advertised through our Careers Service and your academic school
- part-time jobs – advertised through the students' union Joblink website joblink.luu.org.uk
- an undergraduate work placement year – extending your degree to work in a business or other organisation. Check if the undergraduate degree you're interested in offers this at courses.leeds.ac.uk
- internship and ambassadorial opportunities at the University – a great way to build your skills and confidence while being paid

There are some restrictions on the work (paid and unpaid) international students can do. Check what your visa allows and talk to our International Student Office if you're unsure.

Develop transferable skills

Transferable skills – such as spoken and written communication and teamworking – are important whatever degree you study. You'll use them throughout your career and many employers look for them.

Your course or research will help you develop skills like problem-solving, analytical skills and creative thinking.

Free workshops and advice from our Skills@Library service can help you strengthen your skills in writing, presentation and time management.

Student clubs and societies (see page 28) also offer opportunities to develop your personal motivation, teamworking abilities and leadership style, as well as have fun.

Prepare for your future

Leeds for Life helps you make the most of your time at Leeds and prepare for your future. It helps you explore student opportunities, curriculum options and support services, and to succeed in a way that's meaningful to you.

leedsforlife.leeds.ac.uk



Volunteering

Volunteering is a great way to broaden your experience and develop transferable skills while giving something back to the local community. There are lots of volunteering opportunities you can get involved in once you're here. Thousands of our students volunteer for local community groups and charities every year.

luu.org.uk/volunteering-opportunities

Enterprise at Leeds

There are opportunities to develop your entrepreneurial skills as part of your studies. These include our enterprise-related courses and, for undergraduates, broadening your knowledge through discovery themes (see page 10).

If you're inspired to start your own business, Spark, our business start-up service, can help you develop your idea into a viable business.

There are also some great enterprise-focused student societies where you can develop your skills and get practical experience (see page 28).

www.leeds.ac.uk/studententerprise



Study abroad

Most of our undergraduate courses offer the chance to study abroad as part of your degree. We have one of the widest ranges of study abroad opportunities in the UK. You could take part in a summer school in Europe, Asia or Latin America or extend your degree to include a study abroad year.

www.leeds.ac.uk/studyabroad

Career advice and information

Whether you are a student or researcher, our Careers Service offers a range of events, online resources and personal advice and support, including information specially for international students.

Make use of our online resources and personal support to understand your strengths and market yourself effectively. Get advice on résumé writing, job applications and interview skills.

Our many careers events, presentations and workshops can help you understand what employers are looking for and make valuable connections. Events often involve overseas employers and international alumni.

You'll also find internships, placements and support in finding graduate jobs through our Careers Service website.

students.leeds.ac.uk/careers

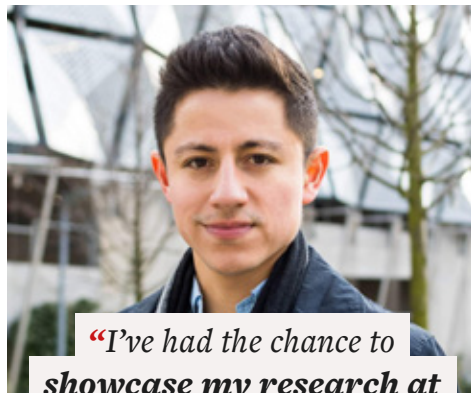
Help from our alumni

As a student or researcher at Leeds, you can access one of the biggest alumni communities of any UK university – a global network of 320,000 Leeds graduates in 197 countries.

You'll have the chance to connect with alumni around the world and benefit from the mentoring, talks, internships and scholarship opportunities they provide.

Building your researcher profile

Your personalised training plan, agreed between you and your supervisor, is the cornerstone of your professional development. To help you develop the skills relevant to your research and future career, we offer workshops, courses and seminars specially designed for postgraduate researchers.



"I've had the chance to showcase my research at international conferences. I've also been published in some open access journals, with the help and support of the University and my supervisor."

Vicente Merida

As a postgraduate researcher, sharing your research and building your professional profile, including through conference presentations, are crucial. Our Doctoral College and your academic school offer opportunities to connect with other researchers and training which will help you realise your professional goals.

www.leeds.ac.uk/doctoralcollege

“

I was already working in the automotive industry, but knew I needed more knowledge in certain areas. My Masters and dissertation project developed understanding and skills I now use all the time in my job. The University helped me get where I am today. Giving something back as an alumni mentor is the least I can do.

Ahmed Oshinibosi

Pictured at Bentley Motors, Crewe



Make connections.

Ahmed's Masters moved his career to the next level. As an alumni mentor, he now shares his industry experience and advises today's students.

An international community.

Advice, help and support services – before you arrive and while you're here.

Chat to our students
www.leeds.ac.uk/linktoleeds

International student support

We've been welcoming international students for over 100 years, so you can be sure of experienced help and support.

Before you arrive

Our team of immigration experts can give you free advice on immigration law and requirements. They can also help you with the visa application process.

www.leeds.ac.uk/immigration

We'll provide information and services to help you prepare for travel to the University and to welcome you on arrival.

www.leeds.ac.uk/internationalwelcome

We hold and attend a range of virtual and in-country events to give advice on life as an international student in Leeds.

www.leeds.ac.uk/visistoyourcountry

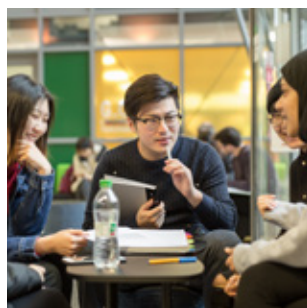
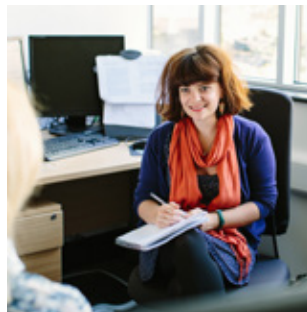
We have overseas offices in China, Nigeria, India and Malaysia, as well as a global network of representatives who can advise you about studying here.

www.leeds.ac.uk/meetus



**31st most
international
university in
the world**

Times Higher Education
2023



Arriving in Leeds

When you arrive in Leeds, our Student Information Service and welcome teams will give you all the information you need to help you settle in during your first few days. We also offer an airport pick-up service on key dates. We will tell you about this before you arrive.

You'll be invited to our international orientation activities, a free programme of useful information sessions and social activities. It's an ideal way to be introduced to life at Leeds and to help you make new friends.

Chat to our students
www.leeds.ac.uk/linktoleeds

Settling in

There are lots of ways to make friends at the University. Enjoy your favourite interests and hobbies or try out new ones through the many clubs and societies at Leeds University Union (see page 28).

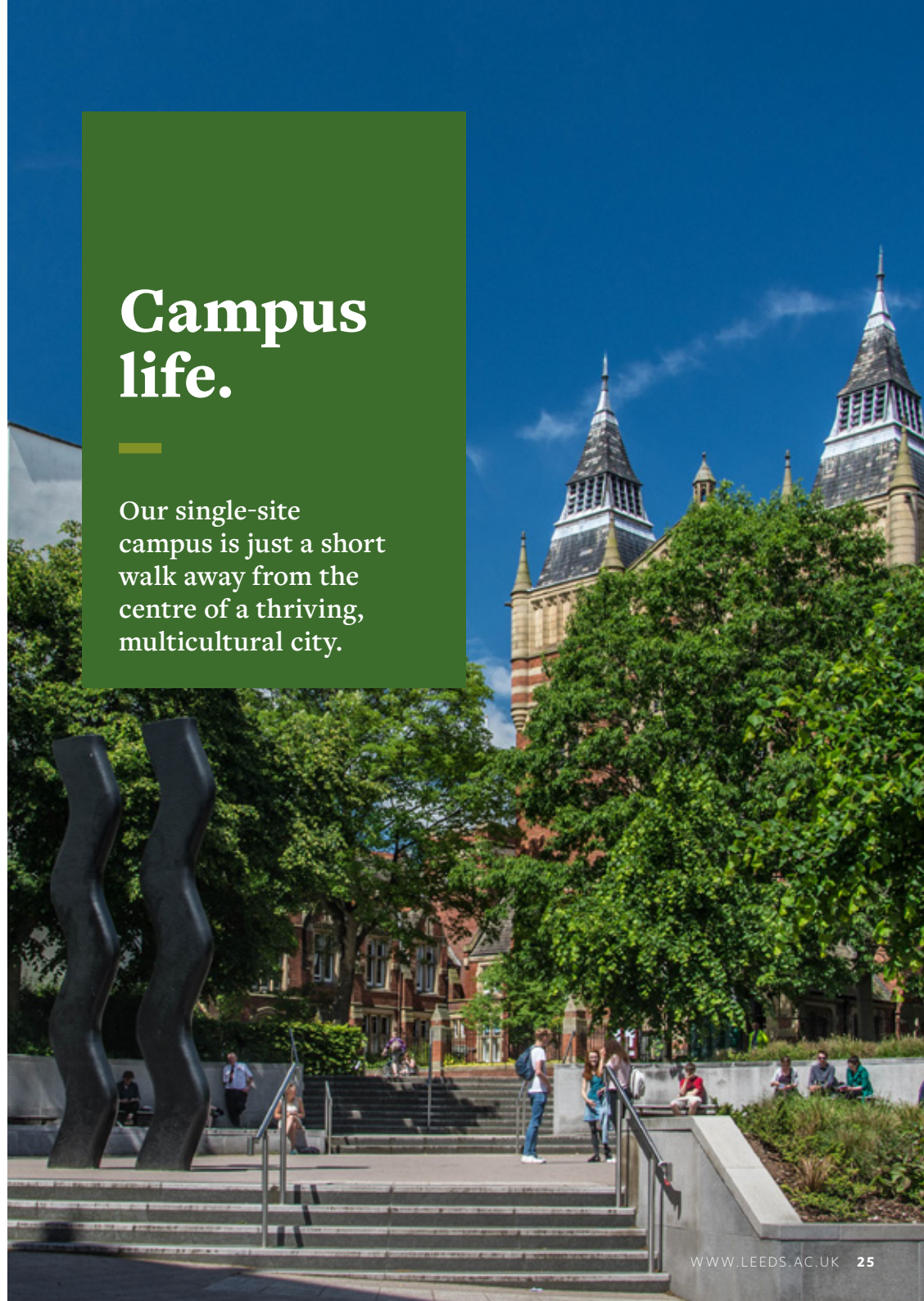
Meet students from all around the world at our weekly Global Café. Explore the beautiful nearby countryside through weekend walking trips as part of the Get Out, Get Active programme (see page 29).

Ongoing support

There is lots of support to help you throughout your time at Leeds, including visa and immigration advice and activities specifically for international students. Find out more about our support and being an international student at Leeds at www.leeds.ac.uk/internationalstudents

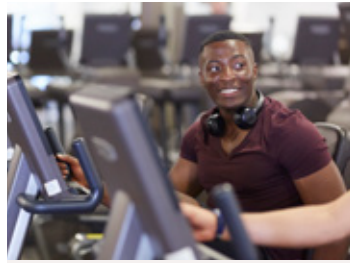
Campus life.

Our single-site campus is just a short walk away from the centre of a thriving, multicultural city.



On campus

Join our global community and immerse yourself in student life at Leeds.



The gym at The Edge, one of our indoor sports facilities



Common Ground, a space to relax in Leeds University Union



Café space outside the Edward Boyle Library



Learn about growing food in our sustainable garden



Sign for Art sculpture in Beech Grove Plaza

Smokefree campus

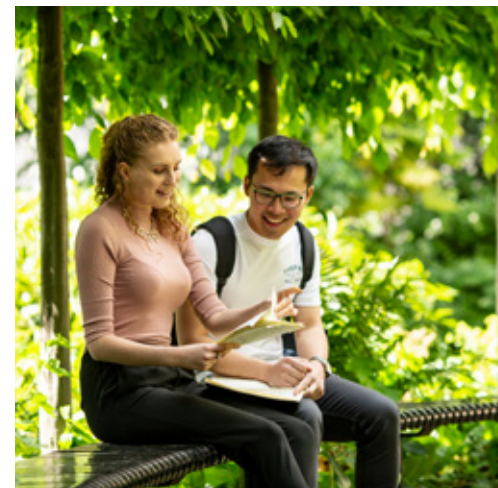
We've created a smokefree campus for everyone's health and wellbeing
students.leeds.ac.uk/smokefree

Explore campus

www.leeds.ac.uk/around-campus



Hugo, our camionnette café, in the main precinct, opposite the Refectory



The Stanley & Audrey Burton Gallery

Your students' union

You'll join one of the best and most active students' unions in the country. Its mission is to make sure you love your time at Leeds.

Leeds University Union (LUU) is independent of the University and is led by students. It brings together the student community and offers impartial advice, support and representation.

The Union building is in the middle of campus. You can buy most things there – from everyday groceries and University clothing to books and stationery.

The Union has cafés, bars and clubs, as well as performance spaces. Top bands and artists play there too.

luu.org.uk

Get involved

With more than 300 student-led clubs and societies, you'll find like-minded people, whatever your interests. Football, debating, theatre, gaming, dance, photography, skydiving, even quadball are just a few of your options. There are different national and faith societies too. Give it a Go sessions are a great way to try something new. And if you and your friends want to take part in an activity which doesn't have a club, the Union will help you set one up.

luu.org.uk/clubs-and-societies

Most academic schools have their own societies too, with social events and talks from industry professionals. They're a great way to get to know people from other courses and year groups.



"I spend most of my free time in the societies. It's a great way to relax and there's a real sense of community. I've made lots of friends through the K-pop dance society and this has exposed me to different cultures."

Adeline Wong

**More than
300 clubs
and societies
for you to
choose from**



Sport and fitness

Keep fit, unwind and socialise with a whole range of sport and fitness opportunities.

The Edge, our indoor sports facility on campus, has a 250-station gym with the latest Technogym equipment, a 25m swimming pool, a sauna and steam room, squash courts, sports halls and a climbing wall. It also runs a wide variety of exercise classes in term-time and virtual classes on demand.

sport.leeds.ac.uk/the-edge

There are excellent outdoor sports facilities at nearby Sports Park Weetwood and Sports Park Bodington, including a 1.6km lit outdoor cycling circuit. An outdoor centre in the Yorkshire Dales offers hiking, caving, mountain biking and climbing. There's also a boat house next to Thwaite Mills in Stourton with direct access to the canal for rowing.

sport.leeds.ac.uk/facilities

Get involved

There are more than 70 sports clubs at Leeds, offering a chance to represent the University, either individually or as part of a team, in the British Universities and Colleges Sports (BUCS) leagues. Our Sport Scholarship programme supports elite athletes to achieve both sporting and academic excellence.

Our social leagues are a great way to play competitively against other student or staff teams, while our weekly social sport sessions offer non-competitive fun without regular commitment. The Get Out, Get Active programme gives you a chance to meet new people while exploring the beautiful Yorkshire countryside.

sport.leeds.ac.uk/sport

Explore campus

www.leeds.ac.uk/around-campus



Wellbeing and support

The University offers lots of resources and information to support you.

Our student website provides the right help when you need it. You'll find information about money issues, health concerns, disability support and more.

students.leeds.ac.uk

Once you're on campus, our Student Information Service is on hand to offer you guidance and support on everything from registration through to graduation.

students.leeds.ac.uk/askingforhelp

Peer support at Leeds includes the University Buddy Scheme, which can match you with another student before you arrive or during your time here, as well as peer mentoring schemes in schools.

students.leeds.ac.uk/universitybuddy

Leeds University Union offers impartial help and support with any problems you may have as a student. Although the team specialises in housing, money and academic concerns, they can support you with anything. Their help is free and completely independent of the University.

luu.org.uk/student-advice

Medical care

Leeds Student Medical Practice is a National Health Service (NHS) doctors' practice which cares for students and their immediate families. It's close to campus and offers all the usual general practitioner (GP) services.

www.leedsstudentmedicalpractice.co.uk

If you need a visa to study in the UK, you will have to pay an immigration health surcharge when you make your visa application. This entitles you to health services under the NHS. The surcharge you pay is based on the length of your visa.

www.gov.uk/healthcare-immigration-application



Student mental health and wellbeing

You can access free professional and confidential counselling, wellbeing and mental health support through groups, workshops, single-session consultations, short-term counselling and online self-help resources.

If you need longer-term support or treatment, we'll help you find the most appropriate NHS or voluntary sector services.

students.leeds.ac.uk/supportandwellbeing

Support for disabled students

If you are a disabled student, we'll work with your academic school and other University services to ensure that we meet your needs and put in place any reasonable adjustments.

Don't wait until you start your course, contact us early so we can discuss your needs and arrange the right support before you get here.

students.leeds.ac.uk/disabledstudents

Childcare on campus

The Bright Beginnings Childcare Centre on campus offers places for children between the ages of three months and five years (preschool). There's also provision in the school holidays for children aged between three and 11 years.

www.brightbeginningschildcare.co.uk

Multifaith campus

There are spaces on campus for prayer and quiet contemplation. In addition, the Emmanuel Centre is a place of welcome and friendship that can offer you support while you're here. You can join in with regular events or talk in confidence to one of our chaplains, who have different faith backgrounds.

students.leeds.ac.uk/prayerandcontemplation

Leeds and Yorkshire.

A lively, cosmopolitan city in the centre of the UK. Easy access to London and mainland Europe. Beautiful countryside nearby. Just some of the reasons our students love Leeds.

Explore all the great things to do in Leeds
www.visitleeds.co.uk



Introducing Leeds

Leeds is at the heart of the UK – a regional hub for business, culture and sport, with a rich industrial heritage and everything you’d expect from one of the country’s largest and fastest-growing cities.

We’re a multicultural city, home to people of many nationalities and faiths. You’ll find places of worship to practise your religious beliefs and to connect with others who share them.

Food and ingredients from around the world are easy to find. Kirkgate Market in the city centre offers a huge range of fresh vegetables, fruit, spices and foods from many different countries.

There are several specialist international supermarkets in the city centre and most large supermarkets sell international foods.

There’s lots of green space in and around the city and stunning countryside surrounds us. The Yorkshire Dales and Peak District national parks, the North York Moors and the Lake District are all within easy reach.

Leeds is well connected, nationally and internationally, with excellent transport links. It’s only 30 minutes from Leeds Bradford international airport and one hour from Manchester airport. A rail service connects you to London and other parts of the country. There’s good, safe transport around the city too.

www.leeds.ac.uk/citylife

Chat to our students
www.leeds.ac.uk/linktoleeds

City life



Light Night Leeds, the UK's largest annual arts and light festival



The Town Hall on the Leeds skyline



County Arcade, one of the city's many historic shopping arcades



Live at Leeds music festival



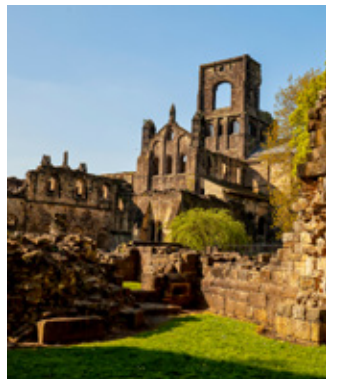
Leeds Central Library and Art Gallery



Tour de Yorkshire cycle race



The food hall in Trinity Leeds shopping centre



Kirkstall Abbey, ruins of an 800-year-old Cistercian monastery



Scarborough, a seaside resort on the east coast



Chevin Forest Park, overlooking the market town of Otley



Leeds water taxi on the River Aire



Woodhouse Moor, a nearby park



Rohan Cheerale

Pictured with friends at Calls Landing by the River Aire

“

The campus is really close to the city centre and I like how handy everything is. I can walk into town to grab some shopping or meet some friends for a bite to eat. The Calls is one of my favourite places, as there are loads of lively riverside bars and restaurants to experience. I love being outdoors and exploring different hikes and trails – you can be in the Yorkshire countryside in less than 30 minutes, which is fantastic.

24/7
city.

Rohan had heard lots of things about Leeds being one of the best student cities. He hasn't been disappointed.

Chat to our students
www.leeds.ac.uk/linktoleeds



Living in Leeds

Leeds is a great place to live, with a wide range of accommodation options. Whether you're looking for University or private accommodation, a flat, shared house or family home, we're confident you'll find something to meet your needs.

We guarantee* an offer of single University accommodation for new students paying international fees who apply before the deadline.

*Restrictions apply relating to deadlines, residence, academic fee status and level of study.



Leeds

One of the best places to live in the UK (North and Northeast)

The Times and The Sunday Times 2023

University accommodation

Our University accommodation can be a fantastic way to make new friends and feel part of our community. We offer a range of options, on and off campus, including postgraduate-only residences, different contract lengths and flexible payment methods.

Your rent includes all utility bills, internet access and basic contents insurance cover, as well as Edge Club gym and sports membership (not included in family or summer accommodation). All our accommodation has a 24-hour security on-call service.

Get more information and view all our residences at accommodation.leeds.ac.uk

Explore campus
www.leeds.ac.uk/around-campus

Private accommodation

Leeds has a wide range of good-quality private accommodation to suit all lifestyles and budgets.

The city centre offers smart, modern apartments, perfect for city living. Headingley and Hyde Park are just a short walk or bus ride from campus and are popular with both students and academics. Several suburbs offer family homes, good schools and green spaces.

Independent help and advice on all aspects of private accommodation is available from:

- Unipol, a student housing charity that works closely with the University
- the independent advice centre in the students' union

www.unipol.org.uk
www.luu.org.uk/student-advice

Your study options.

From summer school to taught or research degrees, there are many ways to study with us. You choose.

International foundation year routes

There are several international foundation year routes which allow you to progress to one of our courses.

University of Leeds International Foundation Year

Our Bachelor degree with Integrated International Foundation Year gives you the opportunity to fulfil your ambition of studying at the University of Leeds.

The initial foundation year will help you prepare for university, focusing on English language and academic study skills. Subject-specific modules will also give you valuable subject knowledge before you start your degree.

Once you've successfully completed this initial foundation year, you'll progress to one of over 150 undergraduate degrees.

Based on campus, all your teaching will be delivered by University of Leeds academics, many of whom are internationally renowned experts in their field.

Our International Pathways Centre team will support you through your first year in the UK. You'll have a personal tutor, who will help guide your academic and personal development. You'll also have access to welfare and study support to ensure you get the most out of your time at Leeds.
www.leeds.ac.uk/ify

Other foundation year options

International Foundation Year at the Leeds International Study Centre (LISC)

If you don't meet the entry requirements to study at the University of Leeds directly, Study Group offers an alternative International Foundation Year at LISC. This is a partnership between Study Group, the University of Leeds and Leeds Beckett University, and provides flexible entry requirements and start dates in September or January. Students are taught by Study Group staff and are based at the Centre's teaching facilities in Headingley, an area of Leeds that is popular with students.

You will gain the academic knowledge and language skills that allow you to progress (when you've successfully completed the course) to Year 1 of a range of undergraduate degrees at the University of Leeds. LISC also offers International Year 1 preparation programmes in certain subjects, allowing progression to Year 2 of an undergraduate degree at the University of Leeds.
www.leedsisc.com

International Foundation Year with Northern Consortium UK (NCUK)

You can also choose to complete foundation year preparation in your home country.

The University of Leeds is a founder member of NCUK, which delivers a range of undergraduate and postgraduate degree pathway qualifications specifically designed as preparation for international students. These qualifications include the undergraduate International Foundation Year and International Year 1 programmes and a postgraduate Masters preparation programme. NCUK provides an extensive network of study centres worldwide.
www.ncuk.ac.uk

Undergraduate courses

Our undergraduate degrees will give you a high level of academic knowledge, as well as great opportunities to develop your personal and professional skills. You can choose from single or joint honours and Integrated Masters courses. Many courses allow you to extend your degree and spend a year on work placement or studying abroad.

On all our courses – single and joint honours – you carry out a final-year research project. On an Integrated Masters course, you study for four years: the first three years at undergraduate level and the final year at postgraduate level.

Joint honours

This guide gives a general overview of our courses. For all the study options and subject combinations you can study, visit [courses.leeds.ac.uk](https://www.leeds.ac.uk/courses)

Short-term study

If you can't commit to degree study with us, you can still experience studying at the University of Leeds and life in the UK.

Study at the University, for a semester or academic year, alongside home and international students taking full degree courses. Choose from a wide range of modules across all faculties at undergraduate and postgraduate level. You may be able to transfer any credits you gain to your degree in your home country. www.leeds.ac.uk/incomingstudyabroad

Leeds International Summer School

Immerse yourself in British culture for two or four weeks at the Leeds International Summer School. This exciting short programme combines world-class tuition with academic field trips. You'll also enjoy social activities and cultural visits, both in Yorkshire and to famous UK cities.

www.leeds.ac.uk/summer

Masters courses

A Masters course offers the chance to study your subject at a higher level and enhance your career prospects.

Our full-time Masters courses normally last up to 12 months. We also offer online-only courses and distance learning courses, which involve online study plus face-to-face meetings (subject to residential status).

You qualify as a Master of Arts (MA), a Master of Science (MSc) or other knowledge area. A Master of Research (MRes) is an advanced, research-based degree which helps to prepare you for PhD study or a research career.

www.leeds.ac.uk/masters

Postgraduate research

Studying for a research degree is about pushing the boundaries of knowledge. A doctorate normally takes three to four years of full-time study to complete.

Find out about our research projects, funding opportunities, research areas and supervisors at phd.leeds.ac.uk

Read more about our postgraduate research opportunities on [page 56](#)

Our subject areas and courses

At Leeds, research is at the heart of our teaching. Our staff are experts in their fields and will share the latest thinking with you.

Accounting, Economics, Finance, International Business, Management and Marketing

Leeds University Business School is one of a small number of business schools worldwide to be triple-accredited by AACSB, AMBA and EQUIS. Our courses combine professional practice, up-to-date business knowledge and research expertise, preparing you for the competitive global job market. We're ranked top 10 in the UK for accounting and finance, business and management, and marketing and PR (Guardian University Guide 2023), and top 10 in the UK for accounting and finance, and marketing (Complete University Guide 2024).

Undergraduate courses

Accounting and Finance
Banking and Finance
Business Economics
Business Management
Business Management and the Human Resource
Business Management with Marketing
Economics
Economics and Finance
Human Resource Management
International Business
International Business and Finance
International Business and Marketing

Masters courses

Accounting and Finance
Banking and International Finance
Business Analytics and Decision Sciences
Consumer Analytics and Marketing Strategy
Corporate Communications, Marketing and Public Relations
Data Analytics and Human Resource Management
Economics
Economics and Finance
Enterprise and Entrepreneurship
Finance and Investment
Financial Mathematics
Financial Risk Management
Global Strategy and Innovation Management
Global Supply Chain Management
Human Resource Management
International Business
International Marketing Management
Management
Management Consulting
Management of Information Systems and Digital Innovation
Marketing Management with Advertising
Master of Business Administration (MBA)
Organizational Psychology and Business
Sustainable Business Leadership (online)

Find out about the undergraduate and Masters courses you can study courses.leeds.ac.uk

Biological Sciences

A world-leading destination for the study of biological sciences, we’re ranked 24th in the UK for biosciences (Complete University Guide 2024). Our courses are at the forefront of knowledge, reflecting the latest developments in the field of biological sciences.

Undergraduate courses

Biochemistry
Biological Sciences
Biological Sciences (Biotechnology with Enterprise)
Biology
Biomedical Sciences
Ecology and Conservation Biology
Genetics
Human Physiology, Physical Activity & Health
Microbiology
Neuroscience
Pharmacology
Zoology

Masters courses

Biodiversity and Conservation
Biodiversity and Conservation with African Field Course
Biopharmaceutical Development
Bioscience
Biotechnology with Business Enterprise
Drug Discovery and Development
Global Conservation Science
Infection, Immunity and Human Disease
Neuroscience
Plant Science and Biotechnology
Precision Medicine: Genomic Data Science
Sustainable Agriculture and Food Production

Chemistry, Physics and Natural Sciences

Experience our world-leading research and learn from academics at the cutting-edge of their field. Our courses will develop your specialist knowledge and research skills to prepare you for a career in both academia and industry.

Undergraduate courses

Chemistry
Chemistry and Mathematics
Medicinal Chemistry
Natural Sciences
Physics
Physics with Astrophysics
Theoretical Physics

Masters courses

Astrophysics
Chemistry
Physics

Computing

The School of Computing has a global reputation for its teaching and research, with over 1,500 students from over 55 countries studying with us. Our computer science graduates are in demand in a variety of sectors, creating the solutions of tomorrow.

Undergraduate courses

Computer Science
Computer Science (Artificial Intelligence)
Computer Science (High-Performance Graphics and Games Engineering)

Masters courses

Advanced Computer Science
Advanced Computer Science (Artificial Intelligence)
Advanced Computer Science (Cloud Computing)
Advanced Computer Science (Data Analytics)
Artificial Intelligence (online)
High-Performance Graphics and Games Engineering

Design

We’re ranked 5th in the UK for art and design (Complete University Guide 2024). Our courses are designed to meet commercial, cultural and technological needs, now and in the future. Combining theory, practice and research, we aim to develop our students as ‘added value’ innovators who can use aesthetics and technology to generate creative concepts and products.

Undergraduate courses

Art and Design
Fashion Design Innovation
Fashion Marketing
Graphic and Communication Design
Sustainable Fashion
Textile Innovation and Sustainability

Masters courses

Advertising and Design
Art and Design
Colour
Design
Digital Design and Communication (online)
Digital Design Futures
Fashion, Enterprise and Society
Global Fashion Management
International Fashion Marketing and Design Management (online)
Textile Sustainability and Innovation

Find out about the undergraduate and Masters courses you can study courses.leeds.ac.uk

Education

We're ranked top 20 in the UK for education (Times Higher Education World University Rankings 2023) and 2nd in the UK for childhood and youth studies (Complete University Guide 2024). Our courses are taught by an international team of leading academics who are experts in their fields.

Undergraduate courses

- Childhood Studies
- Education
- Psychology with Education

Masters courses

- Childhood Studies
- Deaf Education (Teacher of the Deaf Qualification) (blended)
- Digital Education (online)
- Education
- TESOL
- TESOL (China) (taught at Guangdong University of Foreign Studies)
- TESOL Studies

Engineering

Comprising four schools, we're one of the largest engineering groupings in the UK. We focus on interdisciplinary collaboration while delivering world-renowned research and teaching.

We're ranked top 100 in the world for chemical engineering in the QS World University Rankings by Subject 2023, top 5 in the UK for civil engineering in the Guardian University Guide 2023, and top 10 in the UK for mechanical engineering in the Complete University Guide 2024.

Undergraduate courses

- Aeronautical and Aerospace Engineering
- Architectural Engineering
- Architecture
- Automotive Engineering
- Chemical Engineering
- Civil Engineering
- Civil and Environmental Engineering
- Civil and Structural Engineering
- Civil Engineering with Transport
- Electronic and Electrical Engineering
- Electronics and Computer Engineering
- Materials Science and Engineering
- Mechanical Engineering
- Mechatronics and Robotics
- Medical Engineering
- Product Design

Masters courses

- Advanced Chemical Engineering
- Advanced Mechanical Engineering
- Aerospace Engineering
- Automotive Engineering
- Communications and Signal Processing
- Electrical Engineering and Renewable Energy Systems
- Electronic and Electrical Engineering
- Embedded Systems Engineering
- Energy and Environment
- Engineering Management (online)
- Engineering Project Management
- Engineering, Technology and Business Management
- Environmental Engineering and Project Management
- Geotechnical Engineering
- International Construction Management and Engineering
- Materials Science and Engineering
- Mechatronics and Robotics
- Medical Engineering
- Railway Engineering with Project Management
- Structural Engineering
- Transport Infrastructure: Design and Construction
- Water, Sanitation and Health Engineering

English

The School of English is a large, diverse and dynamic learning community with a wide range of research and subject areas. We're ranked 31st in the world for English language and literature in the QS World University Rankings by Subject 2023.

Our undergraduate joint honours courses offer exciting combinations of two subjects in one degree. Some courses can only be studied as joint honours. The list below shows just some of our courses (single and joint honours). For all the options and subject combinations you can study, visit courses.leeds.ac.uk

Undergraduate courses

- English and Comparative Literature
- English and Film Studies
- English Language and Linguistics
- English Language and Literature
- English Literature
- English Literature and Theatre Studies
- English Literature with Creative Writing

Masters courses

- Creative Writing
- English Literature
- Postcolonial Studies

Find out about the undergraduate and Masters courses you can study courses.leeds.ac.uk

Fine Art, History of Art and Cultural Studies

The School of Fine Art, History of Art and Cultural Studies is ranked 5th for art and design in the UK (Complete University Guide 2024). It offers a unique combination of courses centred on the encounter between historical, cultural and theoretical analysis, museum and heritage studies, and fine art practice.

Undergraduate courses

- Cultural and Media Studies
- Fine Art
- Fine Art with Contemporary Cultural Theory
- Fine Art with History of Art
- History of Art
- History of Art with Cultural Studies

Masters courses

- Art Gallery and Museum Studies
- Arts Management and Heritage Studies
- Critical and Cultural Theory
- Fine Art
- Social History of Art

Food Science and Nutrition

We are globally renowned for our teaching and research across the whole spectrum of food science and nutrition, from the molecular level to how food affects our body and how our diet is influencing our health. You'll be taught by active researchers and visiting industry experts, preparing you for a career in one of the world's biggest industries.

Undergraduate courses

- Food Science
- Food Science and Nutrition
- Nutrition

Masters courses

- Food Product Innovation
- Food Science
- Food Science and Nutrition
- Food Science (Food Biotechnology)
- Nutrition

Geography, Environment and Earth Sciences

Our reputation for world-class research and innovative teaching will shape your studies and offer the opportunity to work alongside academics at the forefront of research on major global issues.

We're ranked 10th in the world for geography and 23rd in the world for earth sciences in ShanghaiRanking's Global Ranking of Academic Subjects 2022, and 36th in the world for environmental sciences in the QS World University Rankings by Subject 2023.

Undergraduate courses

- Economics and Geography
- Environment and Business
- Environmental Science
- Geography
- Geography with Environmental Mathematics
- Geography with Transport Studies
- Geology
- Geophysics
- Sustainability and Environmental Management

Masters courses

- Climate and Atmospheric Science
- Climate Futures: Science, Society and Politics
- Ecological Economics
- Engineering Geology
- Environment and Development
- Environmental Data Science and Analytics
- Exploration Geophysics
- Geographical Information Science (online)
- Geographical Information Systems
- Sustainability and Business
- Sustainability and Consultancy
- Sustainable Cities
- Sustainable Food Systems and Food Security
- Urban Data Science and Analytics

History and Medieval Studies

Ranked 26th in the UK for studying history (Guardian University Guide 2023), we have an international reputation for innovative research and teaching in medieval studies, medical histories, military history, the histories of south and east Asia, Africa and the Americas, as well as European, British and international history.

Undergraduate courses

- Ancient History
- History
- International History and Politics

Masters courses

- International History
- Medieval Studies
- Modern History
- Social and Cultural History

Find out about the undergraduate and Masters courses you can study courses.leeds.ac.uk

Languages, Cultures and Societies

Our School is one of the UK’s leading centres for research and teaching in the field of languages, cultures and societies, both ancient and modern, as well as linguistics, translation and film studies. We’re ranked 23rd in the UK for modern languages and linguistics (Guardian University Guide 2023).

Our undergraduate joint honours courses offer exciting combinations of two subjects in one degree. Some courses can only be studied as joint honours. The list below shows just some of our courses (single and joint honours). For all the options and subject combinations you can study, visit **[courses.leeds.ac.uk](#)**

Undergraduate courses

Ancient History
Arabic, Islamic, Middle Eastern and North African Studies
Chinese (Modern)
Classical Civilisation
East Asian Studies
Film Studies
French
German
Islamic, Middle Eastern and North African Studies
Italian
Japanese
Linguistics
Modern Languages
Modern Languages and Business or Economics
Modern Languages and English or History or Philosophy
Modern Languages and International Relations or Politics
Modern Languages and Linguistics
Portuguese
Russian
Spanish
Spanish, Portuguese and Latin American Studies
Thai Studies

Masters courses

Applied Translation Studies
Arabic/English Translation
Audiovisual Translation and Localisation
Business and Public Service Interpreting and Translation Studies
Conference Interpreting and Translation Studies
Film Studies
Linguistics
Linguistics for English Language Teaching
Professional Language and Intercultural Studies

Law and Criminology

We’re ranked top 15 in the UK for law (Complete University Guide 2024) and top 5 in the UK for criminology (Guardian University Guide 2023). You’ll deepen and broaden your knowledge of important aspects of law and criminal justice and develop the analytical and critical reasoning skills so vital in modern employment.

Undergraduate courses

Criminal Justice and Criminology
Law
Law (graduate programme)
Law with French Law
Law with German Law
Law with Hispanic Law

Masters courses

Criminal Justice and Criminal Law
Criminal Justice and Criminology
Intellectual Property Law
International Banking and Finance Law
International Business Law
International Corporate Law
International Human Rights Law
International Law and Global Governance
International Trade Law
Law (graduate programme)
Law and Finance
Law and Social Justice

Mathematics

As one of the UK’s largest mathematics departments, our expertise ranges from data science to fluid dynamics and financial statistics. This gives you the opportunity to specialise and focus on your future career. In the REF 2021, 98% of our research activity submitted was rated ‘world leading’ or ‘internationally excellent’.

Undergraduate courses

Actuarial Mathematics
Data Science
Economics and Mathematics
Financial Mathematics
Mathematics
Mathematics and Statistics

Masters courses

Data Science and Analytics
Data Science (Statistics) (online)
Mathematics
Statistics
Statistics with Applications to Finance

Find out about the undergraduate and Masters courses you can study **[courses.leeds.ac.uk](#)**

Media and Communication

From political campaigns to popular culture and social networking, media and communication are at the centre of everyday life. We're ranked 23rd in the world for communication and media studies (QS World University Rankings by Subject 2023), offering degrees which emphasise choice and skills development.

Undergraduate courses

- Communication and Media
- Digital Media
- Film, Photography and Media
- Journalism

Masters courses

- Communication and Media
- Digital Media
- Film, Photography and Media
- International Communication
- International Journalism
- Media Industries
- Political Communication
- Promotional Media

Medicine, Dentistry, Healthcare and Psychology

We have an internationally excellent reputation for the outstanding quality of our teaching and research. Our goal is to improve quality of life, not only for individuals but also for society. With courses in dentistry, healthcare, medicine and psychology, we'll help you make an impact, whatever your career.

Undergraduate courses

- Audiology
- Dental Surgery, Oral Science
- Diagnostic Radiography
- Healthcare Science (Cardiac Physiology)
- Medical Ultrasound (Sonography)
- Medicine and Surgery
- Psychology
- Advanced Psychology

Masters courses

- Cancer Biology and Therapy
- Cardiac Device and Rhythm Management
- Cardiovascular Health and Disease
- Clinical Education
- Clinical Embryology (distance learning)
- Clinical Embryology and Assisted Reproduction Technology
- Cognitive Development and Disorders
- Dental Materials
- Dental Public Health
- Diagnostic Imaging
- Echocardiography
- Health Informatics with Data Science
- Health Research
- International Health
- Medical Imaging
- Medicine (MRes)
- Molecular Medicine
- Oral Surgery
- Psychological Approaches to Health
- Public Health (International)
- Systemic Family Therapy
- Systemic Practice

Music, Theatre and Performance

Music and performance provide the creative means to express emotions and engage the mind – on stage and in the wider world. Our degrees offer a multidisciplinary approach to your studies in order to develop the critical, creative and entrepreneurial skills needed in the cultural industries.

Undergraduate courses

- Global Creative Industries
- Mathematics and Music
- Music
- Music (Performance)
- Music and Music Psychology
- Music and Music Technology
- Music, Multimedia and Electronics
- Music with Enterprise
- Theatre and Performance
- Theatre and Performance with Enterprise

Masters courses

- Applied Psychology of Music
- Applied Theatre and Social Change
- Arts Fundraising and Philanthropy
- Audiences, Engagement, Participation
- Critical and Experimental Composition
- Culture, Creativity and Entrepreneurship
- Global Performance and Cultural Industries
- Music and Management
- Music and Wellbeing
- Musicology
- Performance
- Performance Design
- Writing for Performance and Digital Media

Find out about the undergraduate and Masters courses you can study courses.leeds.ac.uk

Nursing, Midwifery and Social Work

Ranked top 40 in the world and top 10 in the UK for nursing (QS World University Rankings by Subject 2023), the School of Healthcare has an internationally excellent reputation for the outstanding quality of its teaching and research. You'll be taught by healthcare experts who are embracing technologies and modern facilities to deliver solutions that make an impact in the real world, right now. This means your future career will benefit from the latest thinking, insights and techniques.

Undergraduate courses

- Midwifery
- Nursing (Adult)
- Nursing (Child)
- Nursing (Mental Health)
- Social Work

Philosophy, Religion and Applied Ethics

Ranked 39th in the world for philosophy (QS World University Rankings by Subject 2023), we provide inspirational, innovative teaching and learning in philosophy, religion and the history of science. We're also home to the Inter-Disciplinary Ethics Applied Centre – a specialist unit for teaching, research, training and consultancy in applied ethics.

Undergraduate courses

- Liberal Arts
- Philosophy
- Philosophy and Physics
- Philosophy, Ethics and Religion
- Philosophy, Politics and Economics
- Philosophy, Psychology and Scientific Thought
- Religion, Politics and Society
- Theology and Religious Studies

Masters courses

- Applied and Professional Ethics (online)
- Biomedical and Healthcare Ethics
- Global Ethical Challenges
- Philosophy
- Philosophy of Religion and Ethics (online)
- Religion
- Science, History and Society

Sociology, Social Policy, Politics and International Studies

The School of Politics and International Studies is ranked 20th in the world for development studies (QS World University Rankings by Subject 2023) and brings together an international staff and student community. The School of Sociology and Social Policy is ranked top 20 in the UK for both sociology and social policy (Guardian University Guide 2023), with research that will inform and enrich your learning.

Undergraduate courses

- Economics and Politics
- International Development
- International Relations
- Politics
- Social and Political Sciences
- Social Policy, Sociology and Crime
- Sociology

Masters courses

- Conflict, Development and Peacebuilding
- Decolonial Thought and Social Theory
- Disability Studies, Rights and Inclusion (online)
- Gender Studies
- Global Development
- Global Development and Education
- Global Governance and Diplomacy
- Global Political Economy
- Global Security Challenges
- Inequalities and Social Science
- International Relations
- Political Science
- Social and Public Policy
- Social Research
- Society, Culture and Media
- Terrorism and Insurgency

Sport and Exercise Sciences

We are ranked 13th in the UK for sport science (Guardian University Guide 2023), meaning you will benefit from our specialist teaching knowledge. At postgraduate level, we offer experienced professionals a unique blended learning opportunity with practitioner-led training.

Undergraduate courses

- Sport and Exercise Sciences

Masters courses

- Musculoskeletal Medicine
- Sport and Exercise Medicine
- Sport, Exercise and Rehabilitation

Transport Studies

We're 12th in the world for transportation science and technology in ShanghaiRanking's Global Ranking of Academic Subjects 2022. Our courses have been developed in partnership with industry, are guided by current research and provide excellent teaching. You'll develop specialist knowledge which will set you apart from your peers and help you on your career path.

Masters courses

- Air Quality Solutions
- Railway Operations, Management and Policy
- Sustainability in Transport
- Transport Economics
- Transport Planning
- Transport Planning and Engineering
- Transport Planning and the Environment

Find out about the undergraduate and Masters courses you can study courses.leeds.ac.uk



Postgraduate research opportunities

Studying for a doctorate is about pushing the boundaries of knowledge. You'll conduct your own supervised research and will need to be passionate about your subject.

We'll challenge you intellectually and push you to new levels. A doctorate normally takes three to four years' full-time study to complete. It's hard work but the rewards can be huge. In the end, you'll be an expert in your field.

The scale and quality of our research gives you the opportunity to be part of internationally important work. You can join existing projects, such as those on sustainable food sources and climate change, or conduct your own independent research project. And you'll find all the facilities and support you need to excel during your time here.

The University of Leeds is home to several interdisciplinary centres, including the Bragg Centre for Materials Research and the Priestley International Centre for Climate, which combine expertise from different disciplines to extend the limits of knowledge.

Whatever your specialism, there will be opportunities for you to work with others in your discipline and across disciplines through research groups, conferences and informal networks and social events, both within the University and in other institutions.

Through the faculty graduate schools, our Doctoral College will support you during your time as a postgraduate researcher. The College connects our whole researcher community and puts you in touch with the services, guidance and opportunities you'll need.

Find out more about postgraduate research at Leeds and the support available to you at www.leeds.ac.uk/research-degrees

Explore our postgraduate research opportunities at phd.leeds.ac.uk

Next steps.

Choosing the right university is an important decision and an investment in your future.





Costs to consider

There are two main costs to consider at university: tuition fees and living costs.

Tuition fees

The tuition fees for 2024 should be confirmed by autumn 2023 and will be available on our website.

For undergraduate and Masters students, read more at [courses.leeds.ac.uk](https://www.leeds.ac.uk/courses)

For postgraduate researchers, read more at www.leeds.ac.uk/pgfrfees

If you will be studying a Masters and you need a visa to study in the UK, you must pay a tuition fee deposit, unless you are fully funded by a University-recognised sponsor. Find out more at www.leeds.ac.uk/tuitionfeedeports

Living costs

Living costs include things like your accommodation, food, transport and social activities. Leeds is a relatively low-cost city compared to some areas of the UK, but you still need to budget carefully. Get advice on money, budgeting and the cost of living in Leeds at students.leeds.ac.uk/budgetandcosts

When you apply for your visa, you'll have to prove that you can support yourself financially while in the UK.

www.gov.uk/student-visa/money

Contact our immigration advisors if you have any questions.

www.leeds.ac.uk/immigration-advice



Funding

How to finance your studies will be an important part of your decision-making. You might be able to get funding from government, independent sponsors, the University of Leeds or other funding bodies.

Funding from your country

Check if any funding is available from your country to study in the UK. This could be from your home government, or from companies or organisations based in your home country. Visit their websites or contact your local government office.

Funding from the UK government

The UK government offers postgraduate scholarships to international students, such as the Chevening Awards and the Commonwealth Scholarships. Read more at

www.gov.uk/postgraduate-scholarships-international-students

There is also funding for students in specific countries. Find out what's available on the British Council website at

study-uk.britishcouncil.org/scholarships

Funding from the University

We offer a wide range of scholarships for international students to help towards paying tuition fees or living costs. Check the relevant website below and your academic school's webpages. Scholarships can be very competitive, so it's important you make enquiries and apply to all possible sources of funding at an early stage. Keep checking for updates, as new scholarships are added throughout the year.

Undergraduate students

www.leeds.ac.uk/undergraduatescholarships

Masters students

www.leeds.ac.uk/mastersfunding

Postgraduate researchers

www.leeds.ac.uk/researchdegreesfunding



Your application

Understand the qualifications and English language level you will need, and the visa and immigration requirements.

Entry requirements

All our taught degree courses (undergraduate and Masters) have different entry requirements. Check the entry requirements for the course you're interested in at [courses.leeds.ac.uk](https://www.leeds.ac.uk/courses)

For postgraduate research degrees, check entry requirements on the academic school's webpages or contact the faculty graduate school. www.leeds.ac.uk/graduateschoolcontacts

We accept a range of international qualifications. Check the accepted qualifications and equivalent requirements from your country at www.leeds.ac.uk/internationalqualifications

If you want to study for an undergraduate degree but are not able to gain the equivalent of A-level qualifications in your country, you should consider applying for an international foundation year, which prepares you for undergraduate study. Read about the different foundation year options on page 41 and at www.leeds.ac.uk/internationalfoundation

English language requirements

You will need a recognised English language qualification to study at the University. We accept a range of qualifications, including IELTS Academic. Read more about the qualifications we accept at www.leeds.ac.uk/internationalentry

English language requirements vary between courses. Check the requirement for your course at [courses.leeds.ac.uk](https://www.leeds.ac.uk/courses)

For postgraduate research degrees, check the academic school's webpages or contact the faculty graduate school. www.leeds.ac.uk/graduateschoolcontacts

English language courses

Improve your academic English and begin your degree course with confidence by taking a pre-sessional English course at Leeds.

A pre-sessional will help you improve your English language level to meet the English language requirements of your degree, as well as prepare you for study in the UK.

When you study a pre-sessional at Leeds, you'll:

- experience academic study in the UK
- improve your academic English language skills
- learn from expert academic staff engaged in language learning research
- study a course tailored to your study level:
 - » our undergraduate pre-sessional English course will help you transition from high school to university
 - » in summer, our Masters courses are tailored to your subject area
 - » our postgraduate research courses focus on the specific skills needed for research
- become familiar with University facilities such as libraries, study spaces and learning platforms
- settle into city and campus life before your academic course starts
- meet other students and build a community of peers

As well as our on-campus pre-sessional courses, we also have online pre-sessional courses which you can study from anywhere in the world.

Find out more and how to apply at www.leeds.ac.uk/languagecentre



Visas and immigration requirements

If you're an international student, you'll need to hold an appropriate visa to study in the UK. Read the advice on our website at www.leeds.ac.uk/studentvisa

Our team of immigration experts provides free advice on immigration law and requirements for current and prospective students, and their families. They can give you advice to help you prepare your visa application correctly. www.leeds.ac.uk/immigration-advice



How to apply

There are different ways to apply, depending on the course or research area you want to study. Find out in this section what you need to do.

We have overseas offices in China, Nigeria, India and Malaysia that offer support and advice to prospective students in their regions.

We also work with a global network of representatives who can provide you with comprehensive support to help you with your application.

www.leeds.ac.uk/meetus

You can get independent advice about studying in the UK at

www.ucas.com
discoveruni.gov.uk

Applying for

University of Leeds International Foundation Year

For information on the other foundation routes available, see page see page 41.

Step 1.

Before you apply

Find out more about our foundation year and what you can study.
 Check application deadlines and academic and English language requirements at
www.leeds.ac.uk/ify

Check visa requirements for UK study at
www.gov.uk/student-visa

Step 2.

Apply

Find out about the supporting documents you'll need.

Apply online using our applicant portal at
www.leeds.ac.uk/ifyapply

Step 3.

Get a decision

We will tell you our decision by email.
 You can track your application's progress and, if successful, accept your offer in the applicant portal.



Applying for

An undergraduate degree

Find out more about applying to Leeds and read our admissions policy at www.leeds.ac.uk/howtoapply

Step 1.

Before you apply

Explore the courses we offer. Check application deadlines, academic and English language requirements, and all fees and costs at courses.leeds.ac.uk

Check visa requirements for UK study at www.gov.uk/student-visa

Get advice about writing your personal statement at www.leeds.ac.uk/personalstatement

Check scholarship deadlines.
Read more on page 59.

Step 2.

Apply

Apply online through UCAS at www.ucas.com/students

Get tips about your application and writing your personal statement at www.ucas.com/undergraduate/applying-to-university

Check your emails. We will email you if we need more information to decide about your application.

Step 3.

Get a decision

UCAS will alert you when there is an update on your application. If you receive an offer, you can accept it through UCAS too. www.ucas.com/students



Applying for

A Masters degree

Find out more about applying to Leeds and read our admissions policy at www.leeds.ac.uk/mastersapply

Step 1.

Before you apply

Explore the courses we offer. Check application deadlines, academic and English language requirements, and all fees and costs at courses.leeds.ac.uk

Check visa requirements for UK study at www.gov.uk/student-visa

Check scholarship deadlines.
Read more on page 59.

Step 2.

Apply

Apply online through our applicant portal. Have all your supporting documents scanned and ready to upload, including your university's grading system. Apply as early as possible, so you have time to apply for funding, accommodation and visas, if applicable.

www.leeds.ac.uk/mastersapply

Step 3.

Application processing

Your academic school will contact you if they need more information or want to invite you for interview.

Track your application's progress in the applicant portal. You can do this whether you applied independently or through one of our representatives.

Step 4.

Get a decision

We will tell you our decision by email. If your application is successful, you can view your offer letter and accept your offer in the applicant portal.



Applying for

A postgraduate research degree

Find out more about applying to Leeds and read our admissions policy at www.leeds.ac.uk/pgr/apply

Step 1.

Explore research interests

Explore research interests at Leeds. Choose an existing research project or propose your own. Search research areas and potential supervisors at

phd.leeds.ac.uk

Check visa requirements for UK study at www.gov.uk/student-visa

Step 2.

Check admissions process and requirements for your research area

Check the faculty’s webpages and contact the faculty graduate school. Find out about any deadlines and whether you need to submit a research proposal with your application.

www.leeds.ac.uk/graduateschoolcontacts

Step 3.

Find scholarships and sources of funding

Research your funding options at www.leeds.ac.uk/researchdegreesfunding

Step 4.

Apply

Have all your supporting documents scanned and ready to upload. Check what documents you need and apply online through our applicant portal at

www.leeds.ac.uk/pgr/apply

Step 5.

Get a decision

We will acknowledge your application and let you know our decision by email. You can track your application’s progress and, if successful, accept your offer in the applicant portal.

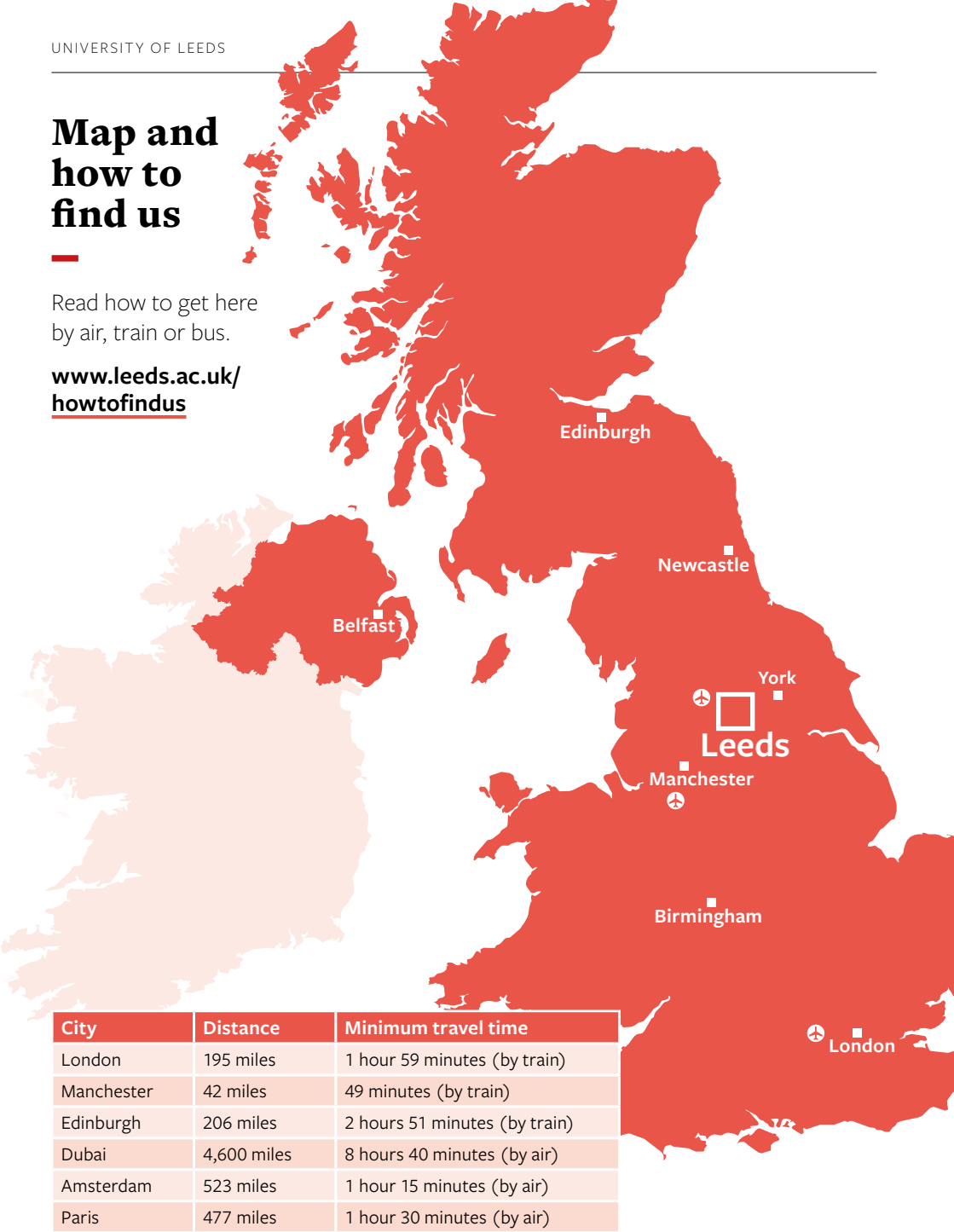


Notes

Map and how to find us

Read how to get here by air, train or bus.

www.leeds.ac.uk/howtofindus



This guide was printed in July 2023 and some of the information it contains may have changed.

Read more about our undergraduate and Masters courses at courses.leeds.ac.uk

Read more about our postgraduate research degrees at www.leeds.ac.uk/pgr

Photo credits

Page 7: Adobe Stock (all images)

Alternative formats

If you require any of the information in this guide in an alternative format, eg Braille, large print or audio, email disability@leeds.ac.uk



UNIVERSITY OF LEEDS

Admissions enquiries

study@leeds.ac.uk

www.leeds.ac.uk/international